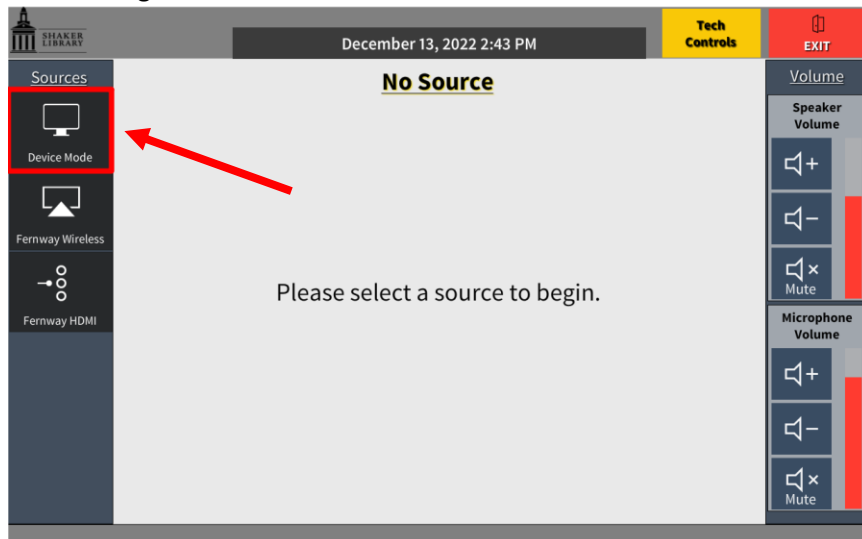


# Fernway AV Guide

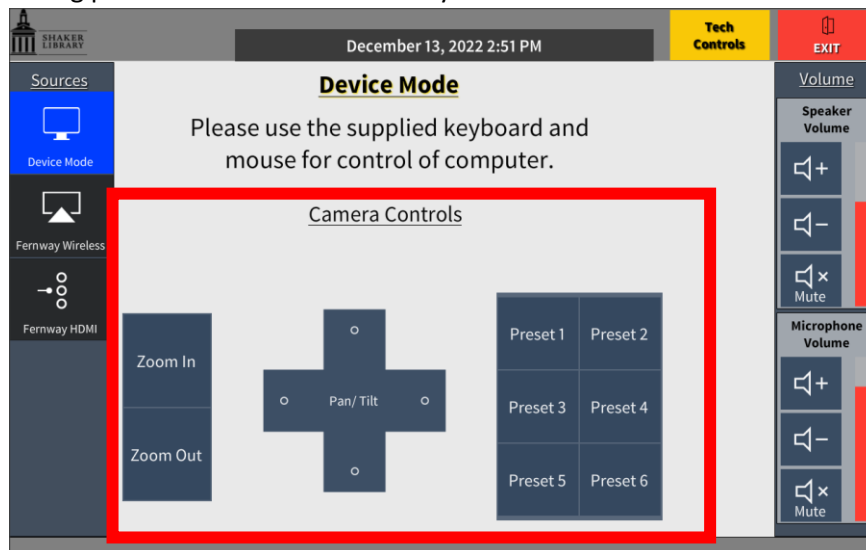
## Divided Mode (using Fernway only)

### For Device Mode:

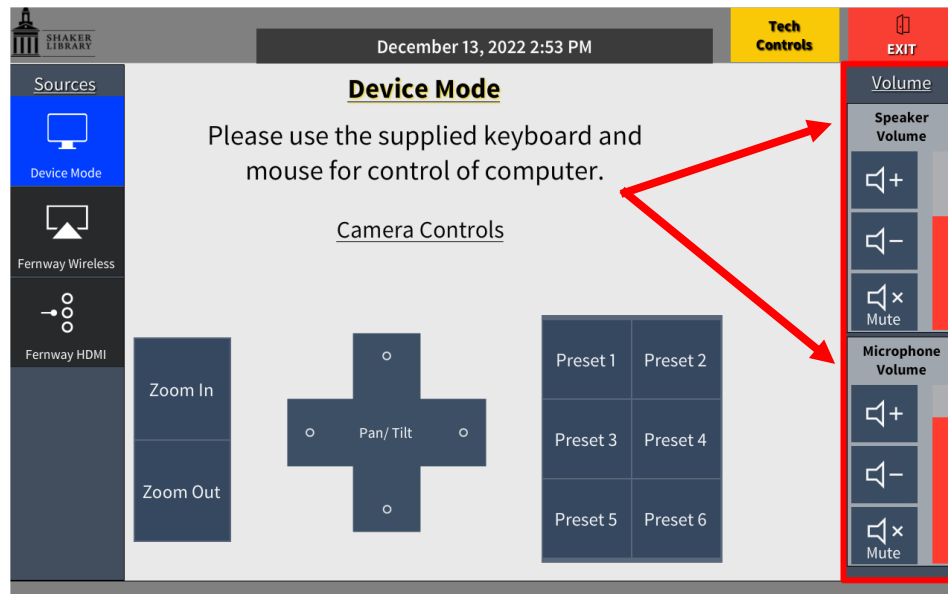
1. Lower the projector screen using the wall control button.
2. Touch the screen to begin. Click Device Mode on the left-hand side.



3. If using the camera, first log into your program (Zoom, Microsoft Teams, Webex, etc.). Then, adjust camera controls as needed using the Zoom In/Out buttons and the Pan/Tilt buttons to move up, down, left, and right. You may also set presets by adjusting the camera to the desired location then long press the Preset button until you see \*Save.



4. To adjust the volume levels of the speaker, use the Speaker Volume panel to the right.



5. When you're finished, press the Exit button in the top right corner.

#### For Wireless Connect Mode (Boulevard & Fernway)

1. Lower the projector screen using the wall control button.
2. Touch the panel to begin. Click Fernway Wireless on the left-hand side.



#### Wirelessly Connect: Apple

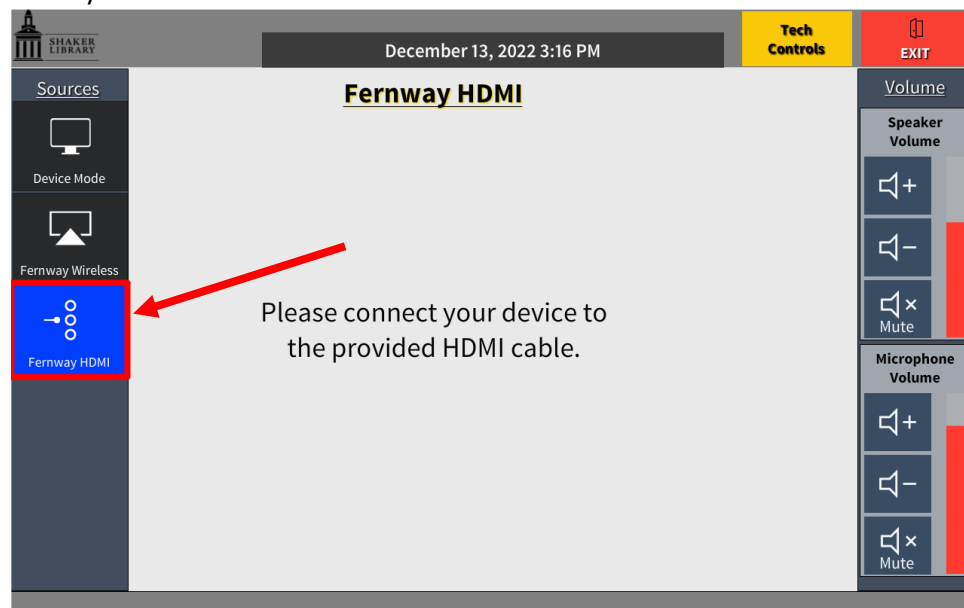
- a. iPhone Users: Connect your device to the library's Wi-Fi. Open the Control Center by either swiping up (iPhone 8 or earlier) or swiping down from the upper-right corner (iPhone X or later). Click the Screen Mirroring icon and select the room.
- b. MacBook Users: Select the menu bar and then Screen Mirroring.
- c. Enter the passcode shown on the display screen to connect.
- d. When finished, reopen the Control Center and select "Stop Mirroring."

#### Wirelessly Connect: Windows PC

- a. On your keyboard, hold the Windows button  and press the "K" key simultaneously to project your screen.
- b. Select the applicable room.
- c. Enter the passcode shown on the display screen and click "connect."
- d. When finished, select "Disconnect."

#### **For HDMI**

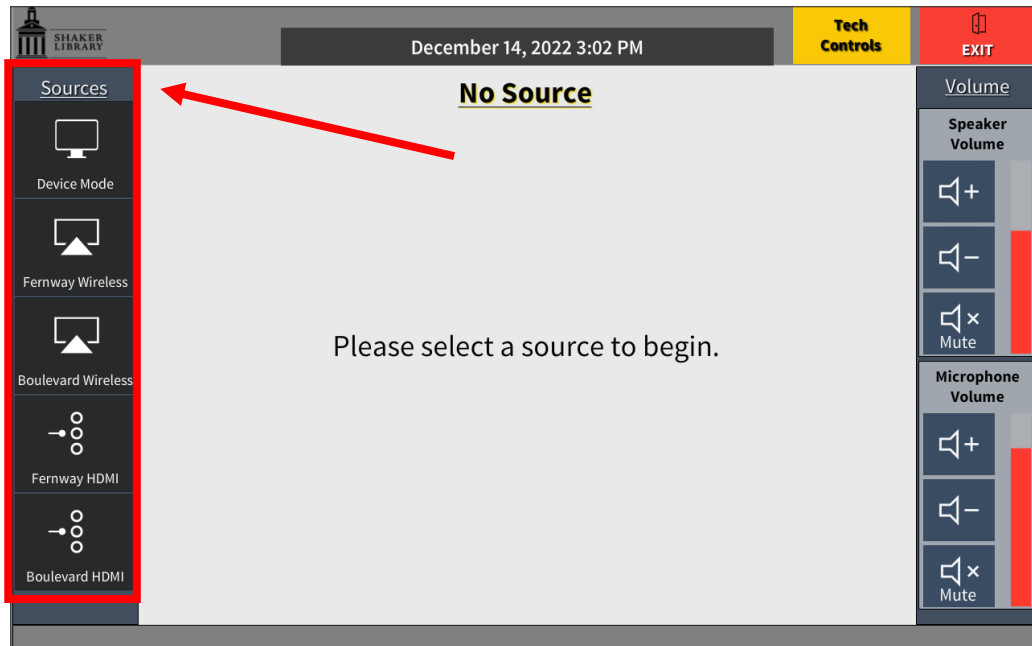
1. Select Fernway HDMI from the left-hand side.



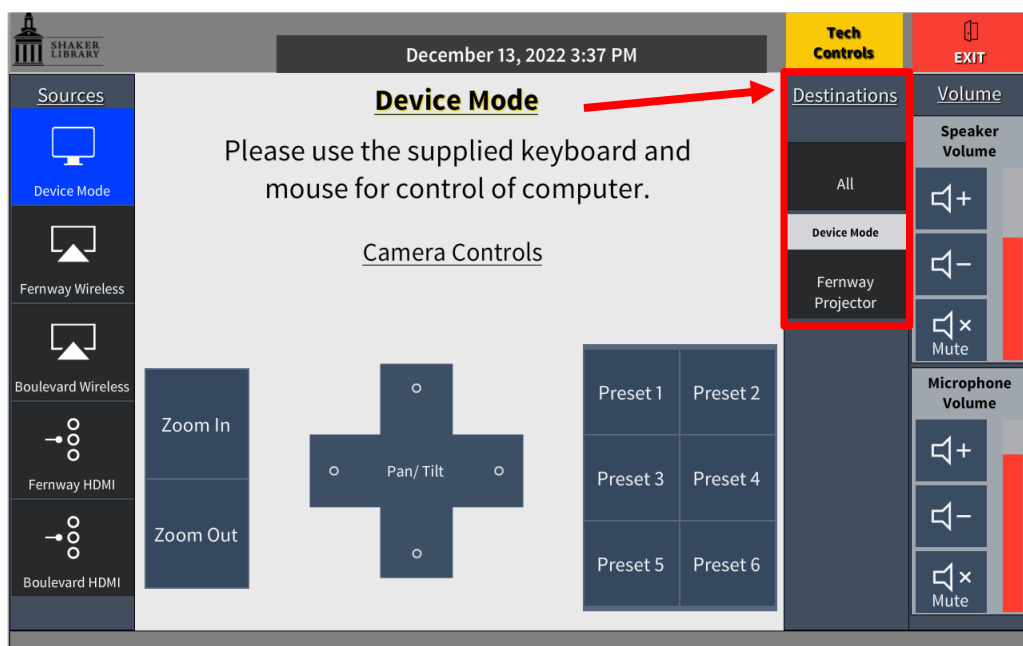
2. Connect the device to the provided HDMI cable.

## Combined Mode (Boulevard & Fernway)

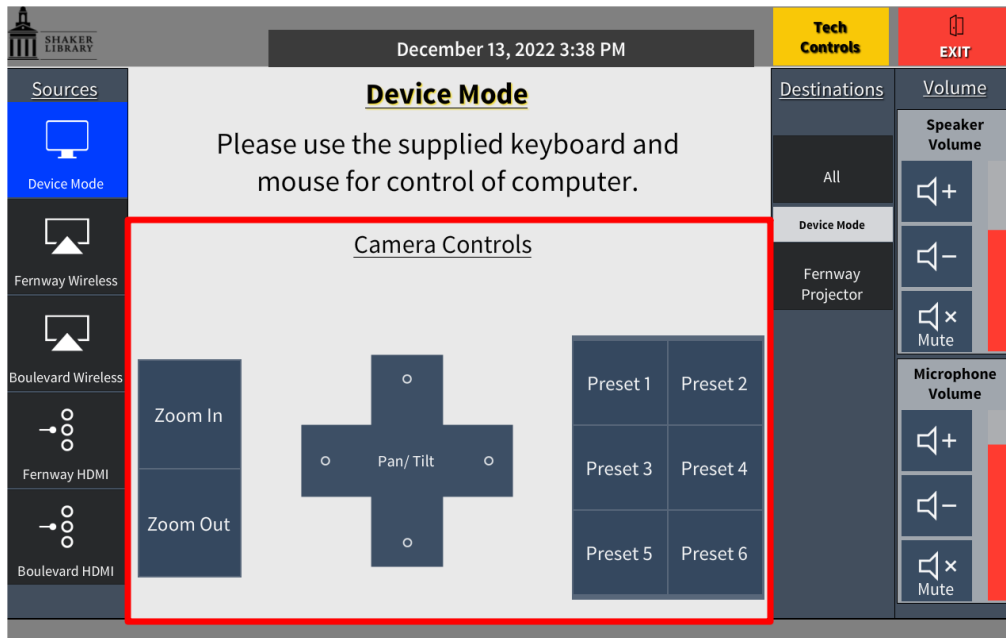
1. Lower the projector screens using the wall control buttons in Boulevard and Fernway.
2. Touch the panel to begin.
3. Click your source on the left-hand side.
  - a. For more information about source modes, please see the Divided Mode instructions.



4. Select your destination: All (Boulevard & Fernway projectors are mirrored) or the Fernway Projector. The projector will beep and turn on.



5. If using the camera, adjust your camera controls on the touch screen using the Zoom In/Out buttons and the Pan/Tilt buttons to move up, down, left, and right. You may also set presets by adjusting the camera to the desired location then long press the Preset button until you see save.



6. To adjust the volume levels of the speaker, use the Speaker Volume panel to the right

