

Appendix C

Community and Staff Visioning Sessions



DRAFT

09.06.2014



**SHAKER
LIBRARY**

SHAKER HEIGHTS PUBLIC LIBRARY

COMMUNITY & STAFF VISIONING SESSIONS

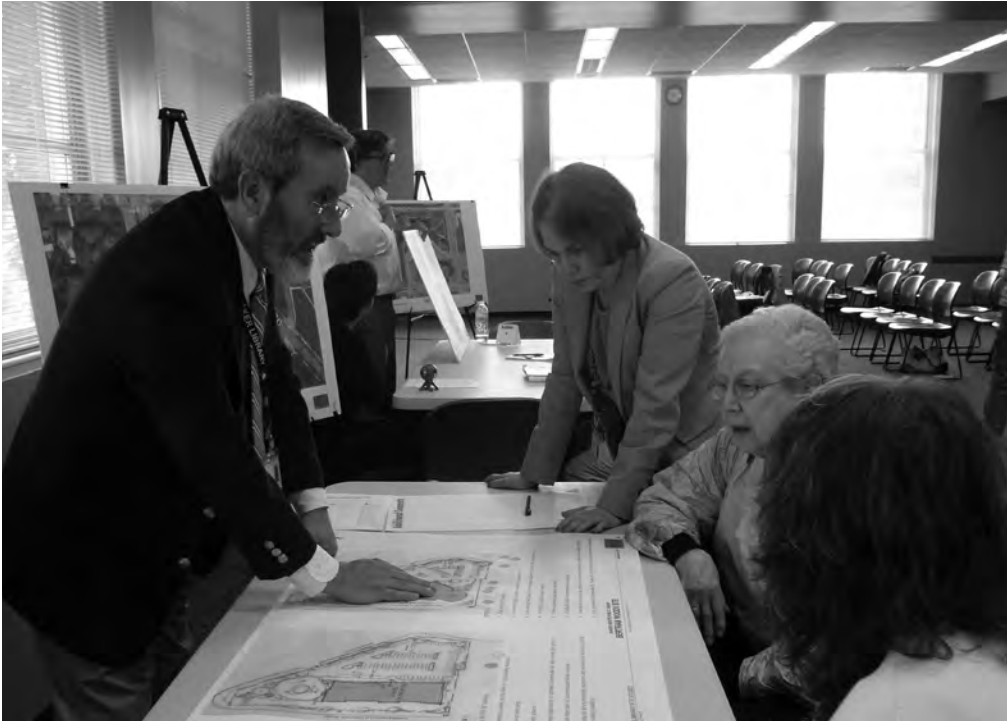


TABLE OF CONTENTS

“Mind-Breaking” Morning Session

“Mind-Breaking” Afternoon Session

“World Cafe” Morning Session

“World Cafe” Afternoon Session

Summary (What we heard the most)



WORK SESSION PARTICIPANTS

MORNING SESSION

[13] participants who primarily use the Main Library

[04] participants who primarily use the Bertram Woods Library

[06] participants who use Both Locations

23 total participants

AFTERNOON SESSION

[13] participants who primarily use the Main Library

[05] participants who primarily use the Bertram Woods Library

[11] participants who use Both Locations

29 total participants



“Mind Breaking” Work Session

The session began with a presentation of a wide variety of images of library spaces from around the world. The images were selected to spark ideas about the possibilities for the Shaker Heights Public Library and to show some of the current trends and services for public libraries.

While viewing the images participants were each given a packet of sheets corresponding to each category in the presentation and a marker to jot down what they liked or didn't like from the array of photos shown. These categories included: entry experience, seating areas, collections, children's areas, teen areas, technology, meeting & collaborative spaces, individualized spaces, service points, and outdoor spaces.

This process allows our team to gather a large amount of meaningful input in a concentrated period of time. Each of the “likes” and “dislikes” is listed in this section, organized by category, and noting the frequency of each response.



mentioned 1 time



mentioned 2-4 times



mentioned 5-9 times



mentioned 10+ times



ENTRY EXPERIENCE MORNING SESSION

Likes

- Improved / larger / bold signage for way-finding x9
- Open / spacious x9
- See a staff member when you walk in x7
- Soft seating / reading / study area near entry x6
- Natural light / bright x6
- Warm / welcoming x3
- Info counter x3
- Place to post community events x3
- Directory x3
- See the entire library when you walk in and know where to go x2
- High ceilings x2
- Free-standing self-checkout terminals x2
- Self-checkout x2
- Stairs to access upper level x2
- Animate entry / real-time trending data wall x2
- More traditional feel x2
- What is inside the building is more interesting
- Increased hours of operation
- Better flow to get in and out of the building
- Easy access to help desk
- Buffer between exterior and interior spaces help focus
- Modern / contemporary look
- Soothing colors
- Wood trim
- Use of color
- Opens to the rest of the library space

- New materials
- Community event space
- Incorporates modern technology
- Hybrid of traditional and modern

Dislikes

- Cluttered x5
- Large open space / cavernous feeling x5
- Real-time trending data wall x4
- Rowdy kids hanging out at entry x2
- High ceilings x2
- Feel like you're walking into a wall / closed off x2
- Seating close to security gates
- Seeing a computer station before you see staff
- Seeing rows of books
- High shelving
- Lots of screens
- Boring colors
- Stand-alone checkout stations
- Self-checkout
- Funky carpet
- Large imposing desk
- Lacking interest

SEATING AREAS MORNING SESSION

Likes

- Natural light / large windows x13
- Plug-ins / outlets for mobile devices x13
- Fireplace / living room feel x8
- Mixed seating types x8
- Visual transparency / glass x7
- Seating with views outside x6
- Good lighting for reading / task lighting x6
- Small rooms / meeting areas x6
- Quiet reading area x5
- Comfortable / soft seating x5
- Tables for study / work x4
- Zoned areas for sound x3
- Social gathering seating area x3
- Easily maintained / clean / sturdy seating x3
- Comfy seats with tables next to them x3
- Traditional spaces x3
- Combination of traditional style with modern furniture x3
- Seating that is easily reconfigured between individual and group areas x2
- Atrium / glass / openness x2
- Transitional look x2
- Tablet-arm chairs
- More attention to study areas
- Seating near the entry
- Seating in stack areas
- Wood tables
- Café / vending area

- Natural materials
- Contemporary / clean / timeless
- Color
- Artwork on walls

Dislikes

- Tiered seating x4
- Too modern x4
- Hard seating x3
- Floor to ceiling windows x2
- Existing chairs
- Carrels
- Living room look
- Too traditional
- Large social gathering space
- Social seating
- Fireplace
- Bench seating
- Plastic chairs
- Austere seating
- Harsh lighting
- Too much wood
- Too open

COLLECTIONS MORNING SESSION

Likes

- Clear / visible / large / bold signage x10
- Face-out displays x9
- Soft seating mixed into collection areas for browsing x8
- Neighborhood areas / organization by genre x6
- Illuminated shelves x5
- Organized by topic x4
- Open space x2
- Low-profile shelves x2
- Understandable / good layout of collections x2
- Bookstore type display x2
- Larger chairs
- Stacks on casters for easy rearranging
- Creative placement of stacks / circular arrangement
- Improved periodicals display (newspaper and magazines)
- Displays throughout space in different areas of interest
- Columns that look like trees
- Connect with Shaker Historical Society collection
- Integrated with School collections
- Mix of new media and traditional collections
- E-books / E-browser
- Islands of books versus stacks

Dislikes

- Shelving with materials too high or too low x2
- Small built-in bookshelves x2
- Living room look x2
- Benches
- Stacks
- Illuminated shelves
- Expensive displays
- Modern shelving
- Poor signage
- Books everywhere on metal shelves
- Cluttered / clunky displays
- Bookstore style

CHILDREN'S AREA MORNING SESSION

Likes

- Interactive learning stations x8
 - Color! x8
 - Basing the Children's Area décor on a book x7
 - Soft / crawl areas x6
 - Natural light / clerestory glass x5
 - Children's area entry feature x5
 - Play / learn / grow areas x4
 - Contained / enclosed area that is highly visible x4
 - Fun and inviting space x4
 - Shelving on wheels x4
 - Reading bubbles / window seats x4
 - Wall-niche with face-out display x4
 - Zoned by age x3
 - Graphics x3
 - Kid-size furniture x3
 - Adjacent outdoor space x2
 - Gaming station x2
 - Low book shelves x2
 - Book bins for picture books / board books x2
 - Bench seating x2
 - Animated children's entry signage
 - Aquarium
 - Emphasis on nature and stories
 - Chairs in fun colors
 - Fun seating
 - Seating for parents and kids
 - Fun / colorful carpet
- Themes
 - Cloud lamp on ceiling
 - Organic forms / look
 - Display space (lots)
 - Windows close to floor
 - Wall space for displays and posters
 - Toys
 - Electronics should be educational
 - Children's area entry with trees
 - Rounded edges for safety
 - Collaborative areas
 - Quiet areas
 - Flexible area for theme changes
 - Puppet stage
 - Integrated with other community children's programs
 - Areas for autistic / disabled children
 - Slide
 - Age appropriate artwork
 - Area specific staff desk

Dislikes

- Gaming station x5
- Colors / themes that will be dated in 5-10 years x3
- Playground / slide x3
- Big graphics x2
- Dark space / dim x2
- A lot of plastic / plastic chairs x2
- Using books as themes x2
- Children's entry with trees x2
- Too busy / sensory overload x2
- Reading bubbles in walls / reading nooks
- Shelves too high for kids
- Book bins
- Too many windows / not enough wall space for displays
- Furniture that tips easily
- Little or no color
- Traditional
- Entertainment
- Soft crawl areas
- Multi-color carpet stripes
- "specimen" tables / science based interactive

TEEN AREA MORNING SESSION

Likes

- Booths x14
- Enclosed in glass x12
- Recording studio x9
- Movie screens x8
- Flexible furniture / moveable seating x7
- Write-able walls / white boards x5
- Flexible space x5
- Gaming station x5
- Pod chairs for individual reading x3
- Lounge seating x3
- Computer stations / technology x3
- Group study rooms with technology x3
- Tiered seating for Teens x2
- Visually open for easy monitoring x2
- Maker space x2
- Great color combinations x2
- Durable furnishings x2
- Tutor space
- Group seating areas
- Mobile shelving
- Tablet-arm chairs
- Private niches

Dislikes

- Pod chairs x3
- Write-able walls x2
- Hotel lobby look
- When teens have to pass quiet areas to get to their space
- Green circular study room
- Tiered seating
- Recording studio
- Gaming
- Too casual

TECHNOLOGY MORNING SESSION

Likes

- Black box Theater / flexible performance space x10
- A/V recording studio x7
- Skype station / private Skype space x6
- Laptop / tablet dispenser x6
- Moveable glass walls for computer lab x6
- Computer lab / flexible classroom space x5
- Creation / maker space x5
- Download station (visible) x4
- One button studio x4
- Power everywhere x4
- Interactive walls x2
- Quick use station
- Maker spaces for all ages / groups
- Digital editing stations
- Both noisy and quiet technology spaces
- Vending area with tables (not staffed café)
- Apple store look
- Science / kitchen space

Dislikes

- Performance space x4
- Loaning laptops x3
- Recording studio x3
- Warehouse look x2
- Fads or fashions
- Outdated technology when opening new facility
- Interactive wall
- Maker space / 3D printer

MEETING & COLLABORATIVE SPACES MORNING SESSION

Likes

- Staffed café area / coffee shop x10
- Vending area with tables x9
- Study rooms enclosed in glass x9
- Meeting spaces with technology x8
- Booths for privacy x5
- Write-able walls / white boards x5
- Garage doors for flexible meeting rooms x4
- Large group meeting rooms / multi-function space x3
- Video conferencing areas x3
- Study rooms with sliding glass walls / doors x3
- Long distance learning x2
- Tutoring space
- Smart boards

Dislikes

- Garage doors for meeting rooms x2
- Glass cube rooms in middle of space x2
- Write-able walls
- Traditional
- Booths
- Tables in walk ways and book stacks
- Any space lacking flexibility

INDIVIDUALIZED SPACES MORNING SESSION

Likes

- Individual study booths x6
- Flexible / moveable seating and tables x2
- Outlets everywhere
- Carrels with whiteboards
- Rooms for independent study
- Alcoves
- More traditional
- Sense of privacy
- Individualized spaces with technology
- Mix of areas (tables, booths, and carrels)

Dislikes

- Carrels with whiteboards x3
- Office carrels

SERVICE POINTS MORNING SESSION

Likes

- Mobile staff stations x8
- Service-oriented signage / “ask us” x7
- Patron sitting side by side with librarian x6
- Staff walking around to assist library patrons x2
- Rounded corners on help desks
- Informal service points provide flexibility
- Clear identification of staff area versus public area
- Desk made out of books

Dislikes

- Large desks
- Only one staff person at a service point
- Traditional
- Staff space that is not obvious to customers

OUTDOOR SPACES MORNING SESSION

Likes

- Children's garden x9
- Reading garden space x6
- Outdoor amphitheater x6
- Outdoor seating areas x5
- Roof top gathering / garden space x5
- Outdoor movie area x3
- Covered space x3
- Tables with umbrellas x2
- Patio-like x2
- Outdoor space for café x2
- Outdoor Storytime area
- Both shaded and sun options
- Lounge seating
- Children's play space
- Picnic area
- Pergola
- Grow canopy
- 3 season space
- Indoor / outdoor fireplace
- Low maintenance
- Promote sustainability / green ideas
- Terrance

Dislikes

- Grow canopy / community garden x3
- Unused outdoor space x2
- Near traffic / noise
- Unsupervised
- Tiered amphitheater
- Rooftop space
- Cold, cement plazas

ENTRY EXPERIENCE AFTERNOON SESSION

Likes

- See staff / information or circulation desk when you walk in x15
- Prominent / clear signage x9
- Open / not crowded x5
- Bookstore / hotel lobby feel x4
- New materials / books x4
- Self-checkout x3
- 2-story space x3
- Real time trending data wall x2
- Warm / inviting x2
- Easy / quick materials pick-up and drop-off x2
- Grocery store style self-checkout stations
- Get a sense of entire layout
- Woodwork
- Lots of light
- Dog-friendly
- Architecturally interesting
- TV / monitor at entry
- Traditional / transitional feel

Dislikes

- Grocery store style check-out stations x8
- Real time trending data wall x5
- Hotel style grand entry x3
- Too open x3
- Seating area near entry x2
- 2-story entry
- Tunnel effect
- Too busy / cluttered
- Dated look
- No people
- Monumental stair
- Bracket signage
- Lack of signage
- Too modern
- Neon colors

SEATING AREAS AFTERNOON SESSION

Likes

- Large windows / lots of natural light x13
- Fireplace x12
- Outlets / ability to plug-in in comfortable reading areas x11
- View of trees / outdoors x10
- Well lit / task lighting x9
- Big tables with loose chairs x8
- Historic / traditional look x6
- Comfortable / lounge seating x6
- Quiet reading area / room x5
- Mix of seating types / styles x5
- Flexible seating x5
- Glass & stone / natural materials x4
- Art displayed on walls x4
- Wood furniture x3
- High ceiling x2
- Seating with ottomans
- Booth seating with chairs
- Combination of historic feel with modern furniture
- Blue / beige color scheme
- Ability to have own space
- Lower ceiling
- Seating near walls / corners
- Lots of color
- Interesting ceiling

Dislikes

- Tiered seating area x15
- Modern furniture x8
- Too much glass x6
- Uncomfortable chairs / hard seats x5
- Fireplace x3
- High ceilings x3
- Plastic furniture x3
- Historic feel x3
- Too modern / cold feeling x2
- Park-like x2
- Red chairs
- Crowding
- Too much light
- Lounge chairs
- Patterns in fabrics and carpets that become dated
- Seats out in the open
- Combined traditional feel with modern furniture

COLLECTIONS AFTERNOON SESSION

Likes

- Flexible / mobile face-out displays for new materials x17
- Seating within collections / neighborhoods for browsing x14
- Bold /easy to read signage in collection areas x12
- Illuminated stacks x9
- Lower stacks x4
- Books organized by topic / genre x4
- Bench seating x2
- Traditional stacks x2
- Flexible shelves
- Living room shelving / sculptural shelves
- Mix of display and seating
- Organized by Dewey
- Lots of space for collections

Dislikes

- Sculptural shelves x6
- Illuminated shelves x6
- Mobile face-out display x4
- Neighborhood shelving with seating incorporated x3
- Taller neighborhood shelves
- Tall stacks
- Old stacks
- Stacks of books on tables
- Too open
- Bookstore feel
- Busy carpet patterns
- Bench seating
- Materials on bottom shelf
- Shelving difficult to browse

CHILDREN'S AREA AFTERNOON SESSION

Likes

- Reading bubbles / nooks for kids and adults x16
- Colorful children's area x14
- Mobile shelving x11
- Exciting / custom entry x9
- Play / crawl space on the floor x9
- Kid-size seating / flexible x9
- Lower shelving at child's level x9
- Zoned by age x8
- Enclosed in glass for sound x8
- Early literacy interactive elements x7
- Storytime room x6
- Face-out display on end panels x5
- Interactive learning elements (alphabet) x5
- Natural light x5
- Book bins x4
- Use natural aesthetic x3
- Bench seating by windows x3
- Separation from preschool to school age children x2
- Kid's area service point in theme x2
- Red chairs
- Open / airy
- Tablets / iPads
- Highlight Children's Area
- Organic forms
- Wood furniture

- Children's book theme
- Tablet-arm chairs
- Gaming area
- Art and graphics

Dislikes

- Tree trunk entry with sound x6
- Slide x5
- Playground look x2
- Laminate floors x2
- Bright red x2
- Play space on floor x2
- Too busy x2
- Gaming area x2
- High ceiling x2
- Book bins x2
- Dark colors
- Themed area
- Fun lighting
- Too bright
- Separate from rest of library
- Large letters interactive display
- Mobile shelving
- Wall graphics
- Things that aren't flexible
- Zoning by age
- The color orange

TEEN AREA AFTERNOON SESSION

Likes

- Booth seating x14
- Flexible furniture arrangements x14
- Enclosed teen area in glass for sound x10
- Recording studio in teen area x10
- Computer bar (counter height) x8
- Study / tutoring spaces with technology x8
- Access to power at tables and seats x7
- Gaming area x6
- Tablet-arm chairs / couches x6
- Pod chairs x6
- Technology x6
- Different areas so teens can work alone or in groups x5
- Drop-down outlets from ceiling x5
- White boards / write-able walls x5
- Lounge seating x4
- Large screen for teen events / movies x4
- Tiered seating for Teens x3
- Mixed seating types x3
- Bench seating x2
- Wood ceiling x2
- Bean bag chairs
- Open feeling
- Creation space
- Bold colors

Dislikes

- Tiered seating x6
- Hidden nooks / privacy x5
- Gaming area x5
- Booth seating x4
- Funky ceiling x4
- Floor seating x4
- Pod chairs x3
- Bean bag chairs x3
- Dull grey couches x2
- Bench seating x2
- Dark colors x2
- Tablet-arm chairs x2
- Too technology focused x2
- White boards / write-able walls x2
- Computer bar x2
- Carpet
- Too open / loud
- Big screen
- Plastic furniture
- Drop-down outlets

TECHNOLOGY AFTERNOON SESSION

Likes

- Flexible performance space / black box theater x13
- Power outlets on tables / everywhere x10
- After hours space x10
- “Find it” station x10
- Device try-it bar / technology petting zoo x10
- A/V recording studio x9
- Creation / maker space with 3-D printer x8
- Interactive wall x6
- Computer lab with sliding glass wall x6
- Computer lab / classroom space with glass walls x5
- Laptop / tablet dispenser x5
- One button studio x4
- Computer labs accessible to public when not in use for programs x2
- Computer lab with high ceiling
- Standing height computer stations
- Animation programs
- Bamboo and wood
- Bright colors

Dislikes

- Flexible performance space / black box theater x5
- A/V recording studio x4
- Laptop / tablet dispenser x4
- Creation / maker space with 3-D printer x3
- Too many glass walls x3
- Device try-it bar / technology petting zoo x2
- “Find It” station x2
- Interactive wall x2
- Sliding glass wall
- Computer lab
- Standing height station
- Open space
- Chairs on castors

MEETING & COLLABORATIVE SPACES AFTERNOON SESSION

Likes

- Glass study rooms with technology / outlets x11
- Small meeting rooms with Smartboards x10
- Distance learning equipment / video conferencing enclosed x6
- Flexible seating in meeting / study rooms x6
- Serpentine booths x5
- Booths in general x4
- Collaborative spaces with moveable pieces x4
- White boards x4
- Garage style doors for meeting rooms x4
- Vending / café area x4
- Vending area with seating x4
- Good signage for study rooms x3
- Bold graphics / patterns x3
- Technology in traditional setting x2
- Café seating x2
- Glass enclosed flexible meeting rooms
- Meeting rooms in variety of sizes
- Glass partitions
- Computer bar
- Café area with casual food (vendor operated)

Dislikes

- Glass cube conference rooms x12
- Vending / café area x3
- Booths in general x3
- Collaborative space x2
- Computer bar x2
- Vendor-operated café
- Small study rooms with
- Business services (Launchouse)
- Serpentine booth seating
- Multi-media furniture out in the open
- Garage doors for meeting rooms
- Traditional conference rooms
- Space that is too stark

INDIVIDUALIZED SPACES AFTERNOON SESSION

Likes

- High back chairs with small tables x9
- Semi-private areas x4
- Reading alcoves by windows x4
- Seating in between stacks x3
- Booth with overhang x3
- High back booths x3
- Use of wood x3
- Booths with screens x3
- Booths in general x3
- Small study rooms x2
- Transparent
- Tables with space to spread out
- Comfortable seating but still visible to staff

Dislikes

- Booths with overhang x6
- Booths with high walls x3
- Seating area in between stacks x3
- Booths in general
- Small study rooms / offices
- Study room without door
- Illusion of privacy

SERVICE POINTS AFTERNOON SESSION

Likes

- **Bold signage at service points x11**
- **Mobile service point x7**
- **Patron and staff person sitting together side by side x6**
- **Desk made out of books x3**
- **“Ask Us” signage x2**
- **Combined info / technology desk x2**
- **Standing height desk x2**
- Seated height desk
- Customer and staff person sitting across from each other but looking at monitor to the side
- Ergonomic staff spaces

Dislikes

- **Standing height service point / tall desks x6**
- **Mobile service point x5**
- **Customer and staff sitting side by side x4**
- Combined info / technology desk
- “Ask Us” signage
- Fortress desk

OUTDOOR SPACES AFTERNOON SESSION

Likes

- Tiered outdoor seating x9
- Outdoor movie night / event space / lawn x7
- Outdoor Storytime area x7
- Front porch x6
- Roof garden x6
- Community garden x6
- Outdoor seating area with plantings x4
- Outdoor fireplace x3
- Patio space with seating x2
- Tables with umbrellas x2
- Rocking chairs x2
- Shaded space x2
- Reading garden with benches x2
- Built-in weather proof seating
- Playground area
- Picnic tables

Dislikes

- Tables with umbrellas x4
- Concrete seating x3
- Amphitheater x2
- Lawn space for movie nights x2
- Tiered seating
- Too modern
- Community garden
- Roof garden
- Outdoor storytime area
- Seating area with tables and chairs



“World Cafe” Work Sessions

The visioning session began with participants splitting into 5 groups. Each group began at a different station placed around the room. After a brief explanation given by the station moderator, attendees were given 10 minutes to engage in a discussion about the materials, develop ideas, and select preferences. After the allotted 10 minutes, participants moved to a different station and continued the process until all 5 stations had been visited. This active and engaging session encouraged participants to interact and share ideas with people they do not see regularly or may not have previously met.

At the end of the session, the moderators presented common ideas and preferences from each station to the entire group.

The responses from each station is listed in this section along with the frequency of each response documenting what the community finds to be preferences for improving the facilities of the Shaker Heights Public Library.



TABLE 1 MORNING SESSION

DEMONSTRATING A RANGE OF ARCHITECTURAL STYLES RANGING FROM GEORGIAN / CLASSICAL TO MODERN

- Inviting / welcoming x3
- Traditional is important - blend with existing buildings / Shaker Heights x3
- Natural light is important x2
- Lighting in general is important x2
- Energy efficient x2
- Green space x2
- Don't want too contemporary (cold and not inviting) x2
- Traditional looks too old
- Blend modern elements into new structures
- M is a nice blend between old and new
- M should be on the corner of Lee and Van Aken with green space in the back, away from traffic
- Long lasting style
- Classical
- Natural materials (stone)
- Nice entry
- Open space
- Accessible to people with disabilities
- More technology
- Interesting features
- Green space in center of building for safety
- Don't like floor to ceiling windows
- Don't want cozy



PARTICIPANTS PLACED DOTS ON THE IMAGES THAT DEMONSTRATED THEIR PREFERRED BUILDING STYLE. THE FOLLOWING PAGES SHOW A SUMMARY OF THE MOST SELECTED IMAGES. (THE ONES WITH THE MOST DOTS) ●

TABLE 1 MORNING SESSION

DEMONSTRATING A RANGE OF ARCHITECTURAL STYLES RANGING FROM GEORGIAN / CLASSICAL TO MODERN



13 likes



7 likes



6 likes



6 likes

TABLE 1 MORNING SESSION

DEMONSTRATING A RANGE OF ARCHITECTURAL STYLES RANGING FROM GEORGIAN / CLASSICAL TO MODERN



Q

6 likes



H

3 likes



P

2 likes

TABLE 2 MORNING SESSION

DEMONSTRATING CONCEPTS FOR RENOVATING THE MAIN LIBRARY; CONCEPT 1 UTILIZES THE UPPER AND GROUND FLOORS OF THE LIBRARY FOR PUBLIC FUNCTIONS, CONCEPT 2 LOCATES ALL PUBLIC FUNCTIONS ON THE GROUND FLOOR WITH THE UPPER FLOOR THEN BECOMING AVAILABLE FOR OTHER USE / TENANTS

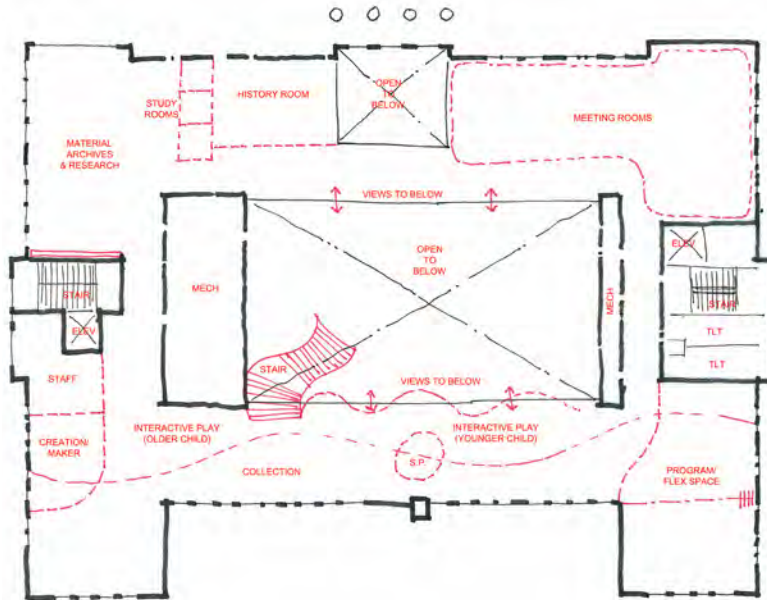
Concept 1

This scheme looks at utilizing both floors of the building for library functions:

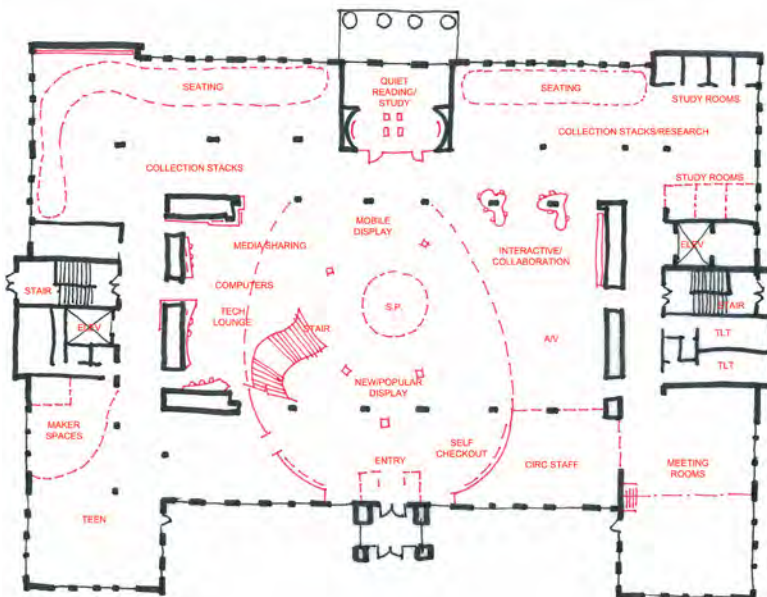
- Collaborative, innovative, and flexible spaces
- Similar to "What's Happening in Libraries Today" presentation
- Monumental stair to the Second Floor
- Opens up the interior by creating openings from the Second Floor into the main Atrium space
- New and popular materials display at Entry
- New Children's Area on Second Floor
- Interactive Early Literacy elements in Children's Area
- Flexible Children's program space
- Relocated History Room
- Added Study Rooms
- Reconfigured Public Meeting Rooms
- New Technology Lounge & Media Sharing
- Centralized Service Point
- Added Study/Small Group Meeting Rooms
- Seating areas near windows taking advantage of views & natural light
- Relocated Teen Area with Maker Space
- New Quiet Reading Room
- Reconfigured and expanded Public Meeting Rooms
- Reworks administrative spaces located in the basement

Concept 1 Comments

- Like monumental stair
- Like teen space by door
- Like opening up windows to seating
- Like opening up walls from 2nd floor
- May be lowest cost option
- Would prefer the Library to be located at Warrensville and Van Aken



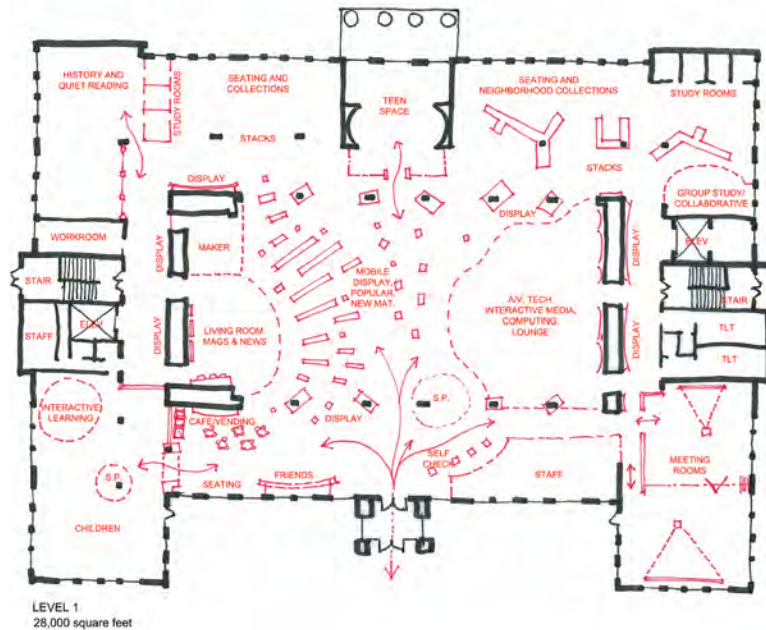
LEVEL 2
21,000 square feet



LEVEL 1
28,000 square feet

TABLE 2 MORNING SESSION

DEMONSTRATING CONCEPTS FOR RENOVATING THE MAIN LIBRARY; CONCEPT 1 UTILIZES THE UPPER AND GROUND FLOORS OF THE LIBRARY FOR PUBLIC FUNCTIONS, CONCEPT 2 LOCATES ALL PUBLIC FUNCTIONS ON THE GROUND FLOOR WITH THE UPPER FLOOR THEN BECOMING AVAILABLE FOR OTHER USE / TENANTS



Concept 2

This scheme looks at locating all public library functions on the First Floor. The Second Floor becomes available for another use/tenant that may be non-library related.

- A small area for collaborative, group study, and presentation space
- Less square footage for each area than in Option 1
- Opens up the views throughout the space
- Expanded and combined History & Quiet Reading Room
- New enclosed Children's Area with entry feature
- Cafe/Vending area
- Living Room area with periodicals
- Maker Space
- Technology Lounge & Interactive Media
- Added Study/Small Group Meeting Rooms
- Relocated Teen space
- Centralized Service Point
- Reconfigured subdividing Public Meeting Rooms
- Seating along windows
- Neighborhood style collection areas for easy browsing
- Friends book sale area
- Reconfigured administrative spaces located in the basement

Concept 2 Comments

- Great to have everything on one floor
- Capture some rent from the 2nd floor
- More crowded
- Doesn't have as much flair, but good for cost reduction
- Would prefer the Library to be located at Warrensville and Van Aken

TABLE 3 MORNING SESSION

SHOULD THE LIBRARY REMAIN IN TWO LOCATIONS OR BE CONSOLIDATED INTO ONE LOCATION? IF THE LIBRARY WERE TO BE CONSOLIDATED INTO ONE FACILITY, WHERE SHOULD IT BE LOCATED? THE MAIN LIBRARY SITE, THE BERTRAM WOODS SITE, OR ELSEWHERE IN SHAKER HEIGHTS.

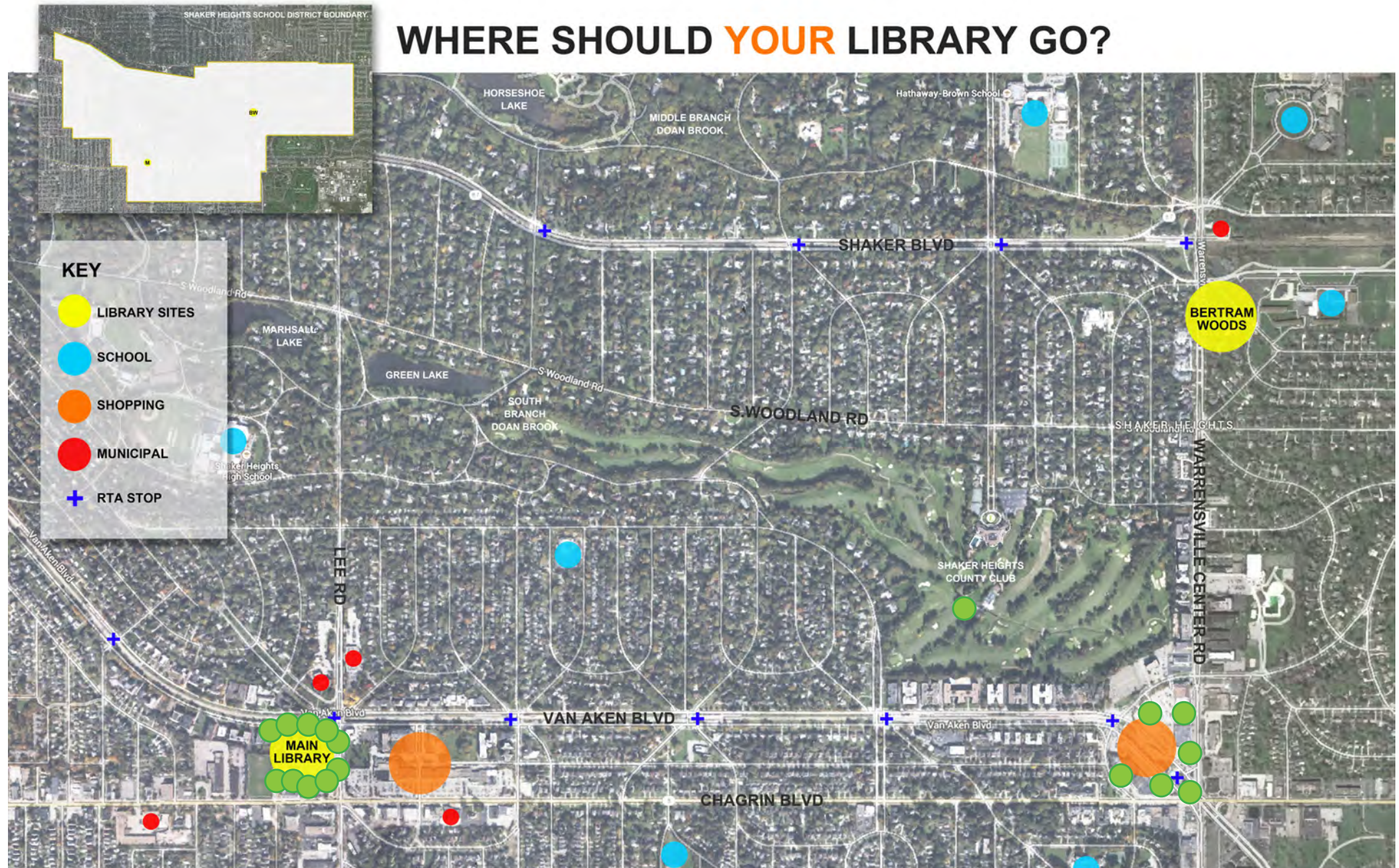


TABLE 3 MORNING SESSION

SHOULD THE LIBRARY REMAIN IN TWO LOCATIONS OR BE CONSOLIDATED INTO ONE LOCATION? IF THE LIBRARY WERE TO BE CONSOLIDATED INTO ONE FACILITY, WHERE SHOULD IT BE LOCATED? THE MAIN LIBRARY SITE, THE BERTRAM WOODS SITE, OR ELSEWHERE IN SHAKER HEIGHTS.

1 Library [x15]

- 2 buildings divides the city x3
- More cost efficient x3
- Environmentally friendly / energy efficient building x2
- Easier for staff to bond with patrons
- Kids can grow within one space
- Will people who go to BW go to Main?
- Prefer a brand new building in one location
- Have underutilized spaces in Main generate income
- Shaker Heights is smaller than it used to be
- Staff prefer working together in one location

2 Libraries [x6]

- Both libraries serve different aspects of the community / populations x2
- The community can support both
- Prefer 2 libraries if cost is not a factor
- Smooth transfer of materials between locations now / current situation works well

Possible Locations

- A centralized location x5
- Have one really great library x2
- Main's southwest location / important for this part of the community to get service x2
- Main's proximity to high school x2
- Both are on Rapid lines / accessibility to RTA is important x2
- Main has good traffic patterns
- Main is more accommodating
- Main offers more opportunity because larger size
- Main is an important anchor for the community
- Walk-ability to Main for high school students is important
- Excellent programming and design at Main could unite the community
- BW's proximity to middle school
- Depends on location of resident
- Does it make sense to put money into a building the Library doesn't own?
- BW is small and limited use
- A Van Aken location might have bad traffic jams

Main Library Site: [x11]

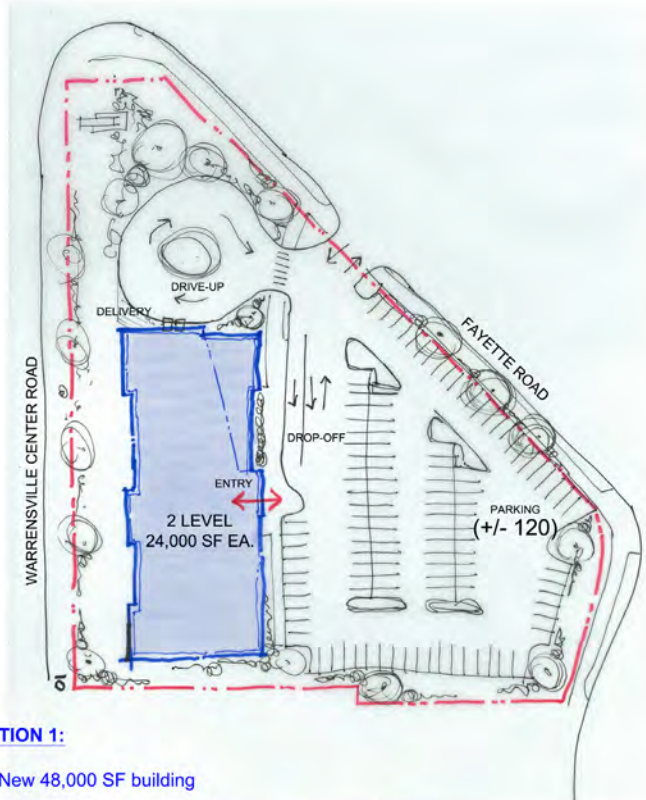
Other Site / Van Aken & Warrensville: [x6]

Other Site / SHCC Golf Course: [x1]

Bertram Woods Library Site: [x0]

TABLE 4 MORNING SESSION

DEMONSTRATING TWO CONCEPTS FOR THE CONSTRUCTION OF A NEW AND CONSOLIDATED LIBRARY ON THE BERTRAM WOODS SITE. CONCEPT 1 MAXIMIZES PARKING ON THE SITE WITH TWO FLOORS OF 24,000 SF EACH. CONCEPT 2 FEATURES A LARGER GROUND LEVEL ALLOWING MOST PUBLIC FUNCTIONS TO BE LOCATED HERE WITH A SMALLER UPPER LEVEL FOR ADMINISTRATION / STAFF.



OPTION 1:

- New 48,000 SF building
- Maximizes parking on the site (+/- 120 parking spaces)
- Drive-up book drop
- Delivery access
- Provides opportunity to address Warrensville Rd. with a bold civic gesture
- Flexible floor plan to accommodate future change
- Potential for library materials, programs, and services not limited by confines of an existing building



OPTION 2:

- New 48,000 SF building
- Assumes the Main Library is vacated or demolished
- Less parking than Option 1 but more green space on the site (+/- 80 parking spaces)
- Potential for outdoor program space
- Drive-up book drop and delivery access
- Flexible floor plan to accommodate future change
- Potential for library materials, programs, and services not limited by confines of an existing building
- Has a presence on Warrensville Rd. / Fayette Rd. Corner through potential corner tower development

TABLE 4 MORNING SESSION

DEMONSTRATING TWO CONCEPTS FOR THE CONSTRUCTION OF A NEW AND CONSOLIDATED LIBRARY ON THE BERTRAM WOODS SITE. CONCEPT 1 MAXIMIZES PARKING ON THE SITE WITH TWO FLOORS OF 24,000 SF EACH. CONCEPT 2 FEATURES A LARGER GROUND LEVEL ALLOWING MOST PUBLIC FUNCTIONS TO BE LOCATED HERE WITH A SMALLER UPPER LEVEL FOR ADMINISTRATION / STAFF.

Concept 1 [x9]

- Could be better for maintenance / operating costs because of simpler form
- Like right angles
- Too modern could look old in 10 years
- Concept 2 looks too trendy

Concept 2 [x12]

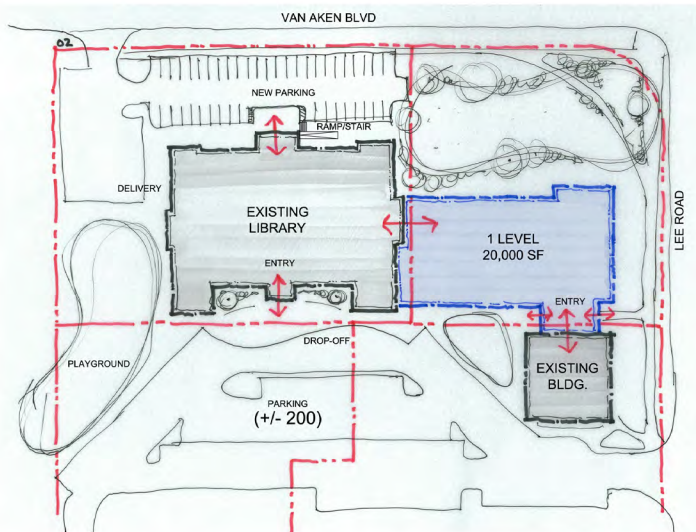
- Welcoming design
- Creative design / architecturally and visually interesting x4
- Like having public services on one level x3
- Operating / staff efficiency x4
- Flexibility of public spaces all on one floor
- Like 2nd floor being available for special uses
- Like the tower forms

Additional Comments

- Like the presence of both concepts on Warrensville and Shaker Blvd. / more visible to the community x5
- Like outdoor programming space x2
- Like that the BW site is already owned by the Library x2
- Might be difficult to draw all of Shaker Hts to the site / far from center of community x2
- Would like to see open / not cramped spaces like in the photos from the presentation
- Consider vacating Fayette Road to gain
- Consider purchasing adjacent property
- Consider adding entry on Warrensville
- Like improved drive-up services
- Like that green space is already a feature of the BW site
- Take location of residential neighbors into consideration when laying out site (deliveries, light pollution, traffic, etc)
- Create buffer zone with residential neighbors
- Don't like the limited growth potential of the site
- Great location for Middle School students but far for High School students
- Great location for after school programs
- Potential for doing more at the Library than just library functions
- Incorporate sustainable / energy efficient design

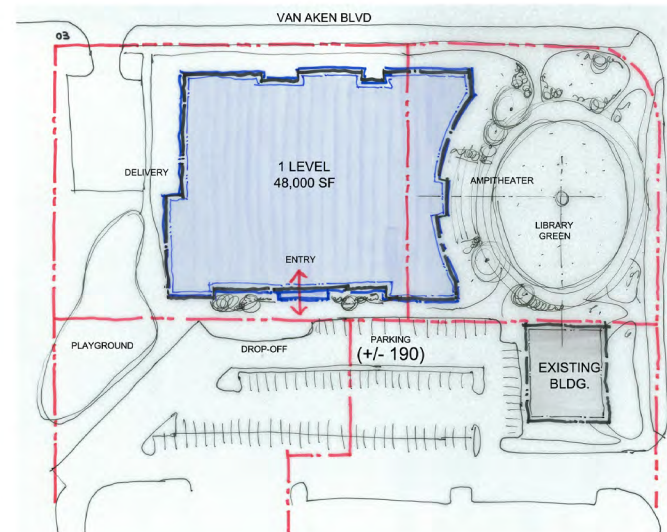
TABLE 5 MORNING SESSION

DEMONSTRATING THREE CONCEPTS FOR THE CONSTRUCTION A NEW AND CONSOLIDATED LIBRARY ON THE MAIN LIBRARY SITE. CONCEPT 1 ADDS A SINGLE-STORY ADDITION CONNECTING THE LIBRARY TO THE COMMUNITY BUILDING AND VACATING THE UPPER LEVEL FOR OTHER USES / TENANTS. CONCEPT 2 DEMOLISHES THE EXISTING BUILDING AND CREATES A NEW 48,000 SF LIBRARY BUILDING ON THE SAME SPOT. CONCEPT 3 DEMOLISHES THE EXISTING BUILDING AND CREATES A NEW TWO-STORY BUILDING ON THE CORNER OF VAN AKEN BLVD. AND LEE RD.



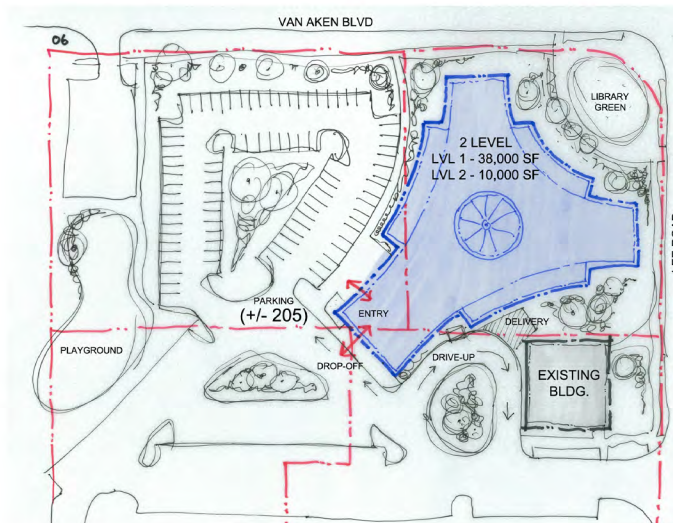
OPTION 1

- New single story addition connects existing Library and Community Building
- Second Floor of Main would be vacated to allow for a separate tenant
- Separate parking along Van Aken Blvd. would be developed for the new tenant
- The library would have a presence nearer to the corner of Van Aken Blvd. and Lee Rd.
- Many of the amenities seen in the "What's Happening in Libraries Today" presentation could be accommodated
- Entire library is on one level, with the exception of the administrative offices located on the lower level



OPTION 2

- Existing Main Library building would be demolished
- A new 48,000 SF single story library building would be constructed in roughly the same location as the existing building
- A "Library Green" would be created at the intersection of Van Aken Blvd. and Lee Rd.
- An amphitheater area would link the east Library facade with the green to be used as outdoor program/tenant space
- Parking is slightly increased to +/- 190 spaces
- Flexible floor plan to accommodate future change
- Potential for library materials, programs, and services not limited by confines of an existing building



OPTION 3

- Existing Main Library building would be demolished
- A new two-level library building would be constructed on the corner of Van Aken Blvd. and Lee Rd.
- The shape of the building would mimic that of the City Hall building across the street
- The building would be an iconic addition to the civic center prominently located and visible from many directions
- This scheme offers the most parking with +/- 205 spaces
- A drive-up book drop is included
- Flexible floor plan to accommodate future change
- Potential for library materials, programs, and services not limited by confines of an existing building

TABLE 5 MORNING SESSION

DEMONSTRATING THREE CONCEPTS FOR THE CONSTRUCTION A NEW AND CONSOLIDATED LIBRARY ON THE MAIN LIBRARY SITE. CONCEPT 1 ADDS A SINGLE-STORY ADDITION CONNECTING THE LIBRARY TO THE COMMUNITY BUILDING AND VACATING THE UPPER LEVEL FOR OTHER USES / TENANTS. CONCEPT 2 DEMOLISHES THE EXISTING BUILDING AND CREATES A NEW 48,000 SF LIBRARY BUILDING ON THE SAME SPOT. CONCEPT 3 DEMOLISHES THE EXISTING BUILDING AND CREATES A NEW TWO-STORY BUILDING ON THE CORNER OF VAN AKEN BLVD. AND LEE RD.

Concept 1 [x7]

- Like library combined with revenue-generating option / tenant space x5
- Questions about who would be tenants for 2nd floor, who would control, are tenants really feasible?
- Seems most cost efficient
- Main library needs “a real punch” - exterior enhancements
- Try to get library green in concept 1

Concept 2 [x6]

- Corner is very noisy for library green x2

Concept 3 [x5]

- Like library green and also drive-up services
- Like outdoor space / for children too
- Has potential if traditional design
- Don't want to completely tear down existing
- Likes the push against the intersection

Additional Comments

- Like the current building, “beautiful”
- Adds value to link to community center
- Is there unwillingness to consider demolishing community center, incorporate it into the new design? Should be considered - current community building not a good design
- Schools have to be our allies
- Which design is the most efficient?
- Like a nice mix between old and new, that reflects Shaker
- Like to have the library close to the street & visible but don't want to lose green space.

TABLE 1 AFTERNOON SESSION

DEMONSTRATING A RANGE OF ARCHITECTURAL STYLES RANGING FROM GEORGIAN / CLASSICAL TO MODERN

- Natural materials (stone with glass) x2
- Incorporate natural light x2
- Blend modern and traditional
- Incorporate nature
- Energy efficient
- Welcoming / inviting
- Traditional
- Classical
- Hipped roofs
- Outdoor seating
- Should be on more than one level
- Should not be iconic
- Not traditional
- No high ceilings



PARTICIPANTS PLACED DOTS ON THE IMAGES THAT DEMONSTRATED THEIR PREFERRED BUILDING STYLE. THE FOLLOWING PAGES SHOW A SUMMARY OF THE MOST SELECTED IMAGES. (THE ONES WITH THE MOST DOTS) ●

TABLE 1 AFTERNOON SESSION

DEMONSTRATING A RANGE OF ARCHITECTURAL STYLES RANGING FROM GEORGIAN / CLASSICAL TO MODERN



11 likes



9 likes



9 likes



7 likes

TABLE 1 AFTERNOON SESSION

DEMONSTRATING A RANGE OF ARCHITECTURAL STYLES RANGING FROM GEORGIAN / CLASSICAL TO MODERN



C

7 likes



N

7 likes



D

3 likes



G

2 likes

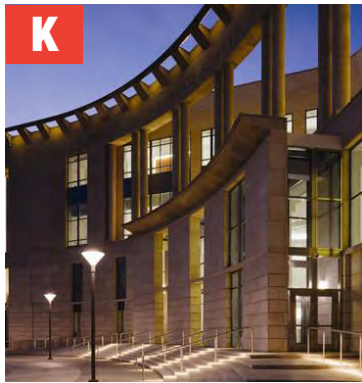
TABLE 1 AFTERNOON SESSION

DEMONSTRATING A RANGE OF ARCHITECTURAL STYLES RANGING FROM GEORGIAN / CLASSICAL TO MODERN



J

2 likes



K

2 likes



R

2 likes

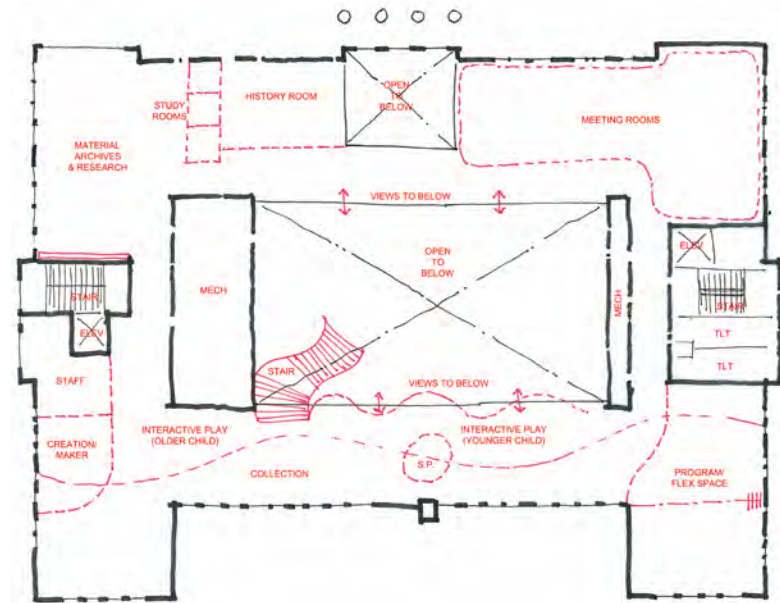


T

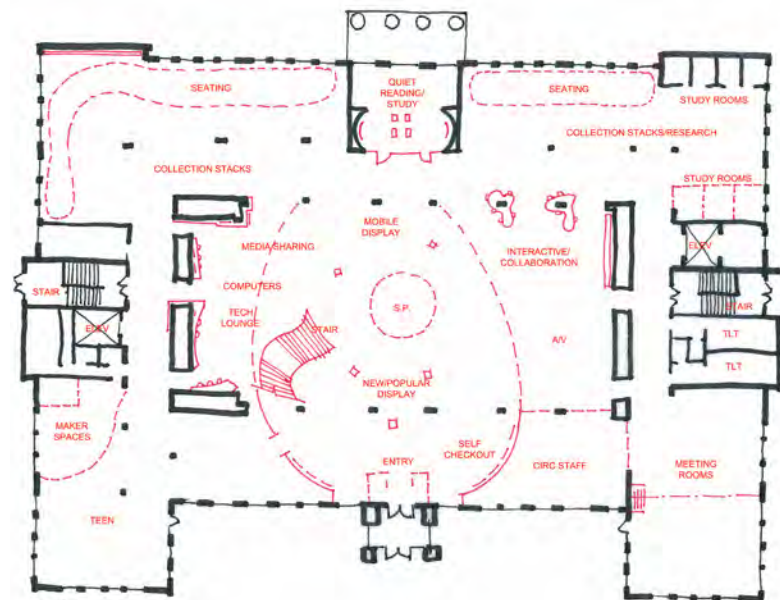
2 likes

TABLE 2 AFTERNOON SESSION

DEMONSTRATING CONCEPTS FOR RENOVATING THE MAIN LIBRARY; CONCEPT 1 UTILIZES THE UPPER AND GROUND FLOORS OF THE LIBRARY FOR PUBLIC FUNCTIONS, CONCEPT 2 LOCATES ALL PUBLIC FUNCTIONS ON THE GROUND FLOOR WITH THE UPPER FLOOR THEN BECOMING AVAILABLE FOR OTHER USE / TENANTS



LEVEL 2
21,000 square feet



LEVEL 1
28,000 square feet

Concept 1

This scheme looks at utilizing both floors of the building for library functions:

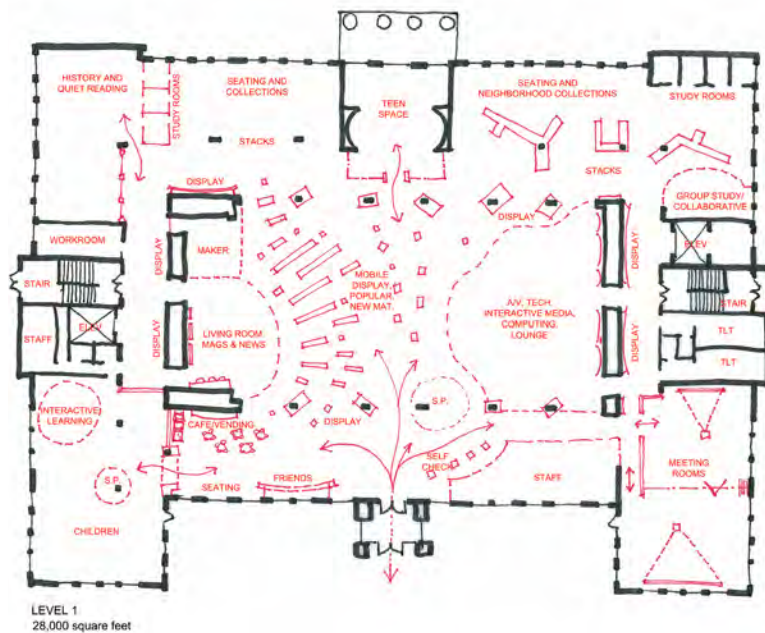
- Collaborative, innovative, and flexible spaces
- Similar to “What’s Happening in Libraries Today” presentation
- Monumental stair to the Second Floor
- Opens up the interior by creating openings from the Second Floor into the main Atrium space
- New and popular materials display at Entry
- New Children’s Area on Second Floor
- Interactive Early Literacy elements in Children’s Area
- Flexible Children’s program space
- Relocated History Room
- Added Study Rooms
- Reconfigured Public Meeting Rooms
- New Technology Lounge & Media Sharing
- Centralized Service Point
- Added Study/Small Group Meeting Rooms
- Seating areas near windows taking advantage of views & natural light
- Relocated Teen Area with Maker Space
- New Quiet Reading Room
- Reconfigured and expanded Public Meeting Rooms
- Reworks administrative spaces located in the basement

Concept 1 Comments

- Limited space for books x4
- Like teen center on 1st floor near door (respectful, not hidden) x2
- Doesn’t improve access x2
- Not enough computer center space x2
- Would like a more central library location in Shaker Heights x2
- Like moving local history upstairs
- Like centralized stair
- Like seating by windows
- Would like more natural light
- Doesn’t address drop-off / pick-up / book drop
- Like Circulation near door
- Opening up 2nd floor might increase noise level
- Don’t like Children’s Area upstairs (tough to get to)
- Like age zoned Children’s Area with progression
- Service point is too far from Circulation
- Too many things on the 1st floor / looks crowded
- Not enough quiet study space
- Don’t like Teens on 1st floor (maybe in basement)
- Like open space
- Need computer lab / classroom

TABLE 2 AFTERNOON SESSION

DEMONSTRATING CONCEPTS FOR RENOVATING THE MAIN LIBRARY; CONCEPT 1 UTILIZES THE UPPER AND GROUND FLOORS OF THE LIBRARY FOR PUBLIC FUNCTIONS, CONCEPT 2 LOCATES ALL PUBLIC FUNCTIONS ON THE GROUND FLOOR WITH THE UPPER FLOOR THEN BECOMING AVAILABLE FOR OTHER USE / TENANTS



Concept 2

This scheme looks at locating all public library functions on the First Floor. The Second Floor becomes available for another use/tenant that may be non-library related.

- A small area for collaborative, group study, and presentation space
- Less square footage for each area than in Option 1
- Opens up the views throughout the space
- Expanded and combined History & Quiet Reading Room
- New enclosed Children's Area with entry feature
- Cafe/Vending area
- Living Room area with periodicals
- Maker Space
- Technology Lounge & Interactive Media
- Added Study/Small Group Meeting Rooms
- Relocated Teen space
- Centralized Service Point
- Reconfigured subdividing Public Meeting Rooms
- Seating along windows
- Neighborhood style collection areas for easy browsing
- Friends book sale area
- Reconfigured administrative spaces located in the basement

Concept 2 Comments

- Is 28,000 SF for public space adequate? Too tight / looks cramped x4
- Not enough room for books x2
- Like Vending / Café Area x2
- Don't like location of Teen Space x2
- Not interested in renovation concepts x2
- Like YSD on 1st floor / putting children up front
- Like Play & Learn area near YSD
- Locate collection together
- Improve signage
- Basement space unpleasant for public
- Space between service area and Circulation is too far
- Teen space is too distracting
- Would there be enough space for TS?
- Not enough meeting room space
- Not enough computer space
- Would like to see outside reading area / patio off of the Moreland Room
- Does not allow for drive-up access

TABLE 3 AFTERNOON SESSION

SHOULD THE LIBRARY REMAIN IN TWO LOCATIONS OR BE CONSOLIDATED INTO ONE LOCATION? IF THE LIBRARY WERE TO BE CONSOLIDATED INTO ONE FACILITY, WHERE SHOULD IT BE LOCATED? THE MAIN LIBRARY SITE, THE BERTRAM WOODS SITE, OR ELSEWHERE IN SHAKER HEIGHTS.

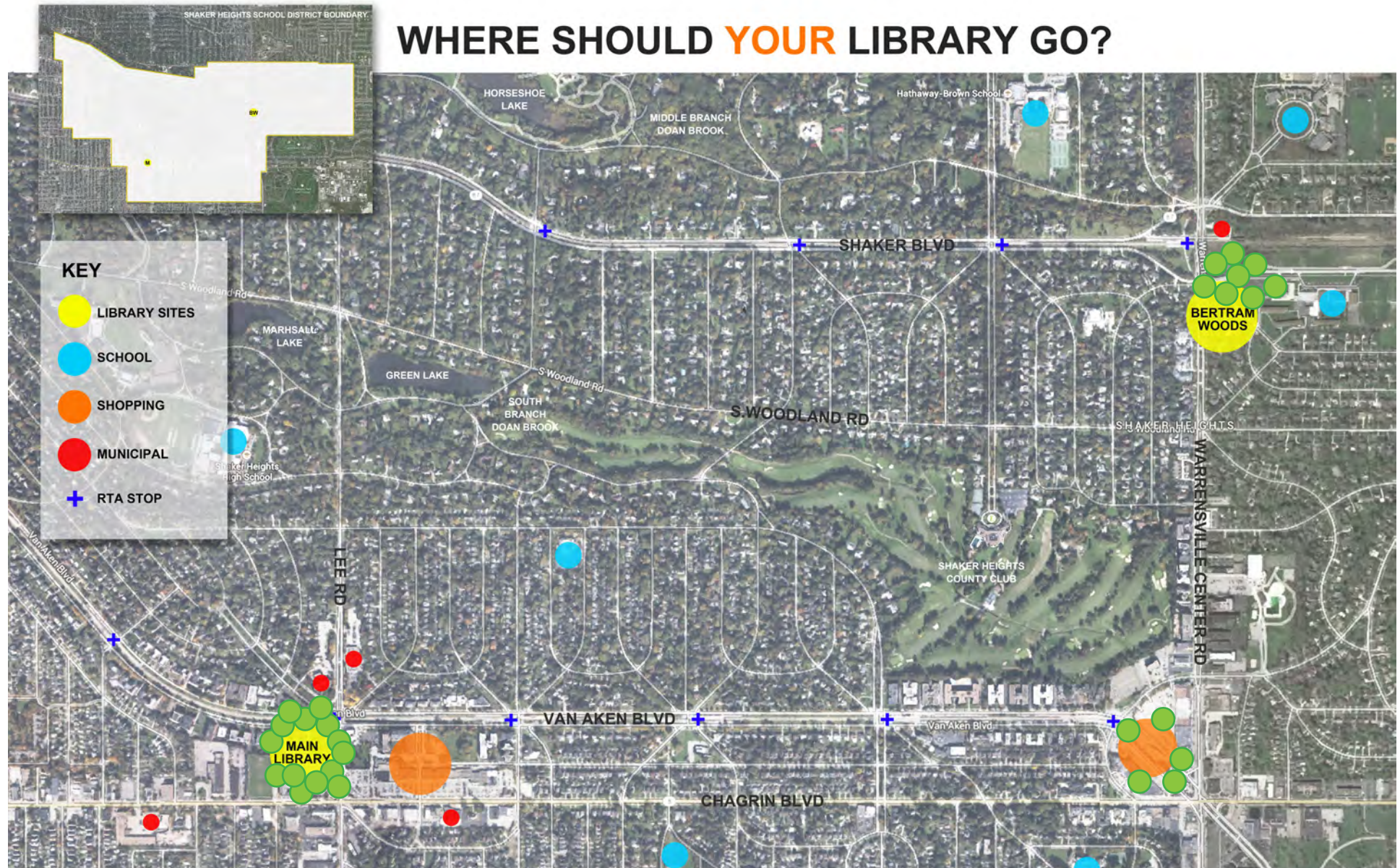


TABLE 3 AFTERNOON SESSION

SHOULD THE LIBRARY REMAIN IN TWO LOCATIONS OR BE CONSOLIDATED INTO ONE LOCATION? IF THE LIBRARY WERE TO BE CONSOLIDATED INTO ONE FACILITY, WHERE SHOULD IT BE LOCATED? THE MAIN LIBRARY SITE, THE BERTRAM WOODS SITE, OR ELSEWHERE IN SHAKER HEIGHTS.

1 Library [x17]

- More financially feasible / cost efficient x5
- One really great 21st century library building x4
- Needs to be accessible to all x3
- One community needs one library x2
- Easier to operate x2
- Prefer all materials at one location
- One location if centralized
- One location will help unify the community

2 Libraries [x3]

- Convenient if both facilities are full-service
- Like a smaller, intimate facility
- Flexibility of 2 locations

Possible Locations

- Van Aken would be the most centrally located x4
- Main is an important place to serve the community x3
- Both Main and BW are accessible via rapid / bus x3
- Bertram Woods is already owned by the Library x3
- BW connection to middle school x3
- VA support and benefit from new development x2
- Main is close to a lot of people x2
- Main is a more commercial area
- Main is working now - used to it
- Main because don't want City to be stuck with a vacant building
- Main anchors the community
- Main is an easy location to get in and out of
- Bertram Woods is also located at a major intersection
- Vision for future development along Warrensville
- BW is a nice site / park-like

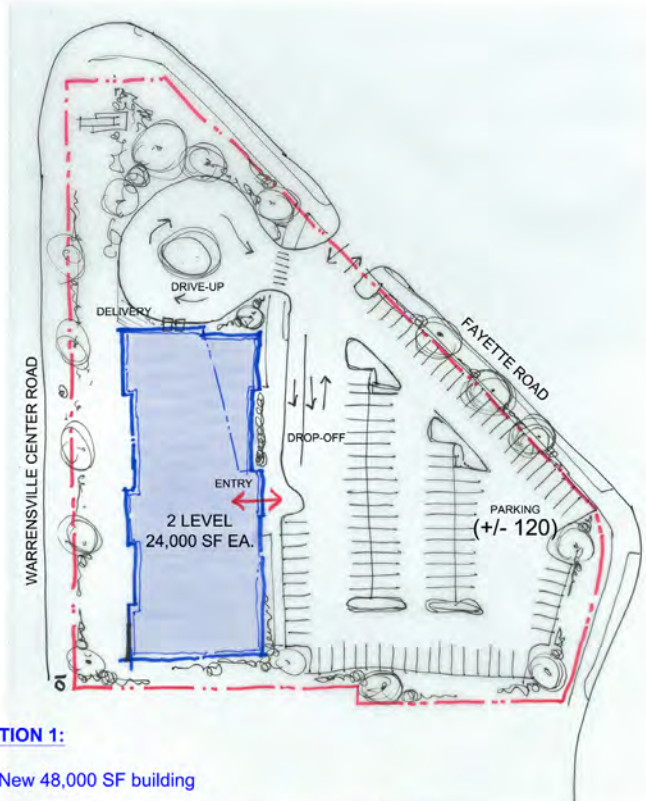
Main Library Site: [x14]

Bertram Woods Library Site: [x8]

Other Site / Van Aken & Warrensville: [x5]

TABLE 4 AFTERNOON SESSION

DEMONSTRATING TWO CONCEPTS FOR THE CONSTRUCTION OF A NEW AND CONSOLIDATED LIBRARY ON THE BERTRAM WOODS SITE. CONCEPT 1 MAXIMIZES PARKING ON THE SITE WITH TWO FLOORS OF 24,000 SF EACH. CONCEPT 2 FEATURES A LARGER GROUND LEVEL ALLOWING MOST PUBLIC FUNCTIONS TO BE LOCATED HERE WITH A SMALLER UPPER LEVEL FOR ADMINISTRATION / STAFF.



OPTION 1:

- New 48,000 SF building
- Maximizes parking on the site (+/- 120 parking spaces)
- Drive-up book drop
- Delivery access
- Provides opportunity to address Warrensville Rd. with a bold civic gesture
- Flexible floor plan to accommodate future change
- Potential for library materials, programs, and services not limited by confines of an existing building



OPTION 2:

- New 48,000 SF building
- Assumes the Main Library is vacated or demolished
- Less parking than Option 1 but more green space on the site (+/- 80 parking spaces)
- Potential for outdoor program space
- Drive-up book drop and delivery access
- Flexible floor plan to accommodate future change
- Potential for library materials, programs, and services not limited by confines of an existing building
- Has a presence on Warrensville Rd. / Fayette Rd. Corner through potential corner tower development

TABLE 4 AFTERNOON SESSION

DEMONSTRATING TWO CONCEPTS FOR THE CONSTRUCTION OF A NEW AND CONSOLIDATED LIBRARY ON THE BERTRAM WOODS SITE. CONCEPT 1 MAXIMIZES PARKING ON THE SITE WITH TWO FLOORS OF 24,000 SF EACH. CONCEPT 2 FEATURES A LARGER GROUND LEVEL ALLOWING MOST PUBLIC FUNCTIONS TO BE LOCATED HERE WITH A SMALLER UPPER LEVEL FOR ADMINISTRATION / STAFF.

Concept 1 [x4]

- 1 like having more parking x4

Concept 2 [x17]

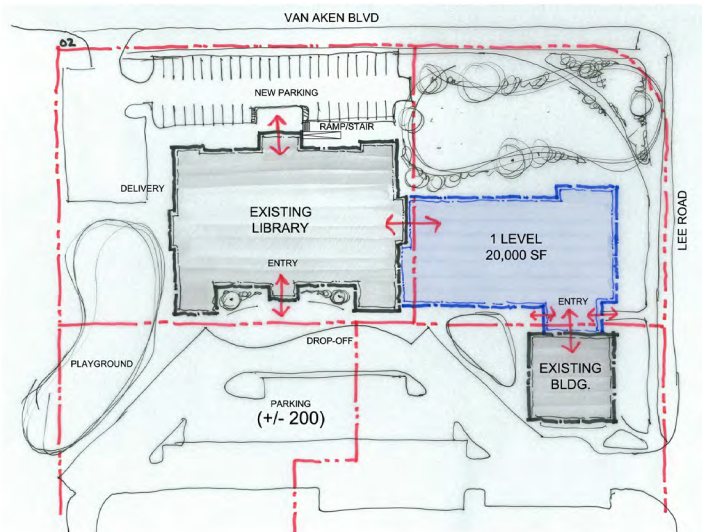
- Like the towers x3
- Go with service model first and find parking later / more efficient staffing x2
- Potential for future expansion on 2nd level on top of larger 1st floor
- Concern about library services on both floors
- More organic form versus linear form

Additional Comments

- Reconsider location of site access on Fayette and parking configuration x5
- Consider vacating Fayette Road to join the school and library campuses x4
- Like lots of glass / natural light x3
- Outdoor program space / rooftop gardens x3
- Consider a basement for added possible SF x2
- Are there restrictions on how tall we can go?
- Café / vending space
- Is it possible that there is oil / natural gas on the site that the Library could benefit from?
- Like visibility from Warrensville
- Is geothermal an option here?
- Consider showing more green space / trees in parking area

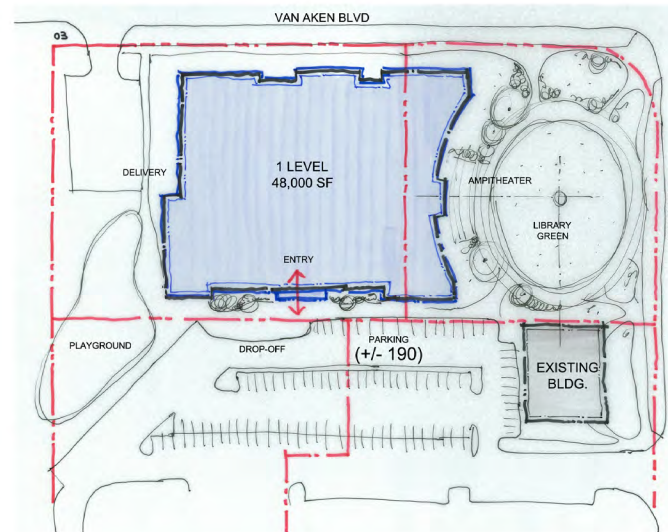
TABLE 5 AFTERNOON SESSION

DEMONSTRATING THREE CONCEPTS FOR THE CONSTRUCTION A NEW AND CONSOLIDATED LIBRARY ON THE MAIN LIBRARY SITE. CONCEPT 1 ADDS A SINGLE-STORY ADDITION CONNECTING THE LIBRARY TO THE COMMUNITY BUILDING AND VACATING THE UPPER LEVEL FOR OTHER USES / TENANTS. CONCEPT 2 DEMOLISHES THE EXISTING BUILDING AND CREATES A NEW 48,000 SF LIBRARY BUILDING ON THE SAME SPOT. CONCEPT 3 DEMOLISHES THE EXISTING BUILDING AND CREATES A NEW TWO-STORY BUILDING ON THE CORNER OF VAN AKEN BLVD. AND LEE RD.



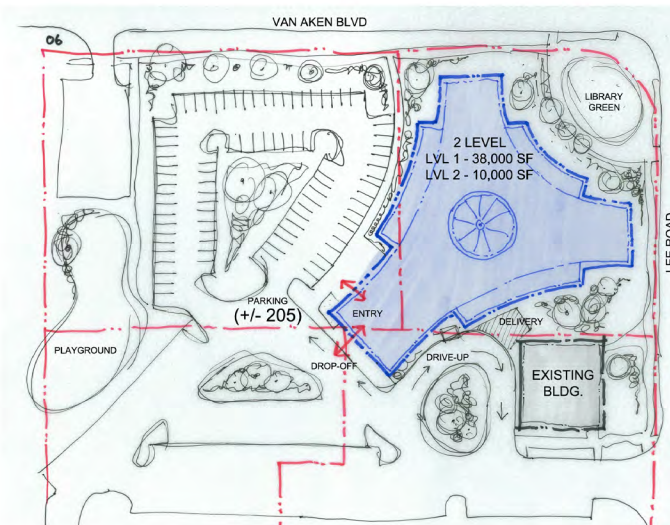
OPTION 1

- New single story addition connects existing Library and Community Building
- Second Floor of Main would be vacated to allow for a separate tenant
- Separate parking along Van Aken Blvd. would be developed for the new tenant
- The library would have a presence nearer to the corner of Van Aken Blvd. and Lee Rd.
- Many of the amenities seen in the "What's Happening in Libraries Today" presentation could be accommodated
- Entire library is on one level, with the exception of the administrative offices located on the lower level



OPTION 2

- Existing Main Library building would be demolished
- A new 48,000 SF single story library building would be constructed in roughly the same location as the existing building
- A "Library Green" would be created at the intersection of Van Aken Blvd. and Lee Rd.
- An amphitheater area would link the east Library facade with the green to be used as outdoor program/tenant space
- Parking is slightly increased to +/- 190 spaces
- Flexible floor plan to accommodate future change
- Potential for library materials, programs, and services not limited by confines of an existing building



OPTION 3

- Existing Main Library building would be demolished
- A new two-level library building would be constructed on the corner of Van Aken Blvd. and Lee Rd.
- The shape of the building would mimic that of the City Hall building across the street
- The building would be an iconic addition to the civic center prominently located and visible from many directions
- This scheme offers the most parking with +/- 205 spaces
- A drive-up book drop is included
- Flexible floor plan to accommodate future change
- Potential for library materials, programs, and services not limited by confines of an existing building

TABLE 5 AFTERNOON SESSION

DEMONSTRATING THREE CONCEPTS FOR THE CONSTRUCTION A NEW AND CONSOLIDATED LIBRARY ON THE MAIN LIBRARY SITE. CONCEPT 1 ADDS A SINGLE-STORY ADDITION CONNECTING THE LIBRARY TO THE COMMUNITY BUILDING AND VACATING THE UPPER LEVEL FOR OTHER USES / TENANTS. CONCEPT 2 DEMOLISHES THE EXISTING BUILDING AND CREATES A NEW 48,000 SF LIBRARY BUILDING ON THE SAME SPOT. CONCEPT 3 DEMOLISHES THE EXISTING BUILDING AND CREATES A NEW TWO-STORY BUILDING ON THE CORNER OF VAN AKEN BLVD. AND LEE RD.

Concept 1 [x4]

- Interesting to tie to existing building / connect x3
- Would like this option with green space
- Can a drive-up services entrance from Van Aken be worked into this concept?
- Potential for empty 2nd floor is a concern

Concept 2 [x9]

- Noisy corner - consider flipping so the green space is on the other side of the building
- Like the green space in this option

Concept 3 [x10]

- Would like to have drive-up services
- Consider incorporating a covered entrance to the community center
- Is an exciting way to use the corner
- Love the amphitheater and green space

Additional Comments

- Like an entrance to the site from Van Aken x3
- Would like more parking than library currently has
- Consider a parking structure / garage
- Consider an entry from Van Aken in addition to the current site entry
- Like the building as is
- Consider opening Van Aken to parking, lower level as meeting rooms
- A new building has more efficiency
- Bertram Woods has the strongest easy in & out access
- Could the address be changed to Lee Road?
- Is anything planned for existing area where Moreland building is?

SUMMARY “MIND BREAKING”

Likes 30+

- Power outlets for mobile devices in comfortable reading areas / on tables / everywhere x39
- Natural light / large windows x32

Likes 20-29

- Booths in Teen Area x28
- Glass study rooms with technology / outlets x24
- Seating within collections / neighborhoods for browsing x23
- Flexible performance space / black box theater x23
- Bold /easy to read signage in collection areas x22
- See staff / information or circulation desk when you walk in x22
- Colorful children’s area x22
- Teen Area enclosed in glass x22
- Flexible furniture / moveable seating for Teens x21
- Fireplace / living room feel x20
- Reading bubbles / nooks for kids and adults x20

Likes 15-20

- Flexible / mobile face-out displays for new materials x19
- Recording studio in Teen Area x19
- Prominent / clear / bold signage for way-finding x18
- Booths in general x18
- Open / spacious / not crowded x17
- Seating with views to outside x16
- Children’s area entry feature x16
- A/V recording studio x16
- Well lit / task lighting x15
- Soft / crawl areas for young children x15
- Mobile shelving in Children’s Area x15
- Early literacy interactive elements x15
- Mobile service point x15
- Tiered outdoor seating x15

SUMMARY “MIND BREAKING”

Likes 10-14

- Mixed seating types x14
- Illuminated stacks x14
- Creation / maker space with 3-D printer x14
- Vending area with seating x14
- Comfortable / lounge seating x13
- Tables for study / work x13
- Children’s Area zoned by age x13
- Traditional / historic feel x12
- Kid-size seating / flexible x12
- Lower shelving at child’s level x12
- Enclosed in glass for sound x12
- Large screen for events / movies in Teen Area x12
- Patron and staff person sitting together side by side x12
- Natural light / clerestory glass in Children’s Area x11
- Study / tutoring spaces with technology in Teen Area x11
- Tablet-arm chairs x11
- Moveable glass walls for computer lab x11
- Staffed café area / coffee shop x11
- Small meeting rooms with Smartboards x11
- Distance learning equipment / video conferencing enclosed x11
- Bold signage at service points x11
- After hours space x10
- “Find it” station x10
- Device try-it bar / technology petting zoo x10
- Quiet reading area x10
- Write-able walls / white boards in Teen Area x10
- Computer lab / classroom space with glass walls x10
- Outdoor movie night / event space / lawn x10

SUMMARY “MIND BREAKING”

Likes 5-9

- Write-able walls / white boards x9
- High back chairs with small tables x9
- Service-oriented signage / “ask us” x9
- Children’s garden x9
- Face-out displays x9
- Basing the Children’s Area décor on a book x9
- Pod chairs for individual reading x9
- Computer stations / technology in Teen Area x9
- Reading garden space x8
- Meeting spaces with technology x8
- Garage style doors for flexible meeting rooms x8
- Outdoor Storytime area x8
- One button studio x8
- Computer bar (counter height) in Teen Area x8
- Interactive wall x8
- Glass & stone / natural materials x8
- Collections organized by topic / genre x8
- Lower shelves for adult collections x8
- Access to power at tables and seats in Teen Area x7
- Soft seating / reading / study area near entry x7
- Visual transparency / glass x7
- Lounge seating in Teen Area x7
- Flexible / easy to move seating x7
- Neighborhood areas / organization by genre x6
- Small rooms / meeting areas x6
- Flexible seating in meeting / study rooms x6
- Front porch x6
- Roof garden x6
- Community garden x6
- Book bins for picture books / board books x6
- Storytime room x6
- Gaming area x6
- Skype station / private Skype space x6
- Laptop / tablet dispenser x6
- Different areas so teens can work alone or in groups x5
- Drop-down outlets from ceiling x5
- Face-out display on end panels x5
- Interactive learning elements (alphabet) x5
- Bench seating by windows in Children’s Area x5
- Serpentine booths x5
- Semi-private areas x5
- Reading alcoves by windows x5
- Warm / welcoming x5
- New materials / books at entry x5
- Self-checkout x5
- 2-story space at entry x5
- Combination of traditional style with modern furniture x5
- Flexible Teen space x5
- Gaming station in Teen Area x5
- Tiered seating for Teens x5
- Laptop / tablet dispenser x5
- Art displayed on walls x5
- Wood furniture x5
- Outdoor seating areas x5
- Roof top gathering / garden space x5

Likes 2-4

- Download station (visible) x4
- Play / learn / grow areas x4
- Fun and inviting space x4
- Wall-niche with face-out display x4
- Graphics x4
- Animate entry / real-time trending data wall x4
- Bookstore / hotel lobby feel at entry x4
- High ceilings x4
- Place to post community events x4
- Bench seating x4
- Easy / quick materials pick-up and drop-off x4
- Collaborative spaces with moveable pieces x4
- Vending / café area x4
- Desk made out of books x4
- Outdoor seating area with plants x4
- Outdoor fireplace x4
- Patio space with seating x4
- Tables with umbrellas x4
- Gaming station in Children’s Area x3
- Kid’s area service point in theme x3
- Maker space in Teen Area x3
- Mixed seating types x3
- Easily maintained / clean / sturdy seating x3
- Comfy seats with tables next to them x3
- Transitional look x3
- Bookstore style display x3
- Zoned areas for sound x3
- Social gathering seating area x3
- Good signage for study rooms x3
- Bold graphics / patterns x3
- Large group meeting rooms / multi-function space x3
- Study rooms with sliding glass walls / doors x3
- Seating in between stacks x3
- Booth with overhang x3
- High back booths x3
- Use of wood x3
- Booths with screens x3
- Shaded space x3
- Covered space x3
- Wood trim / woodwork x3
- Use of color x3
- Info counter x3
- Directory x3
- See the entire library when you walk in and know where to go x3
- Free-standing self-checkout terminals x3
- Visually open Teen Area for easy monitoring x2
- Great color combinations x2
- Durable furnishings x2
- Wood ceiling x2
- Computer labs accessible to public when not in use for programs x2
- Standing height quick use computer stations x2
- Digital editing stations x2
- Bar style/ height seating x2
- Seating that is easily reconfigured between individual and group areas x2
- Atrium / glass / openness x2
- Understandable / good layout of collections x2
- Traditional stacks x2
- Technology in traditional setting x2
- Café seating x2
- Combined info / technology desk x2
- Standing height desk x2
- Staff walking around to assist library patrons x2
- Rocking chairs x2
- Playground area x2
- Outdoor space for café x2
- Modern / contemporary look x2
- Outdoor space adjacent to Children’s Area x2
- Artwork in Children’s Area x2

SUMMARY “MIND BREAKING”

Dislikes 15-20

- Tiered seating area for adults x19

Dislikes 10-14

- Glass cube conference rooms x14
- Playground / slide in Children’s Area x10

Dislikes 5-9

- Flexible performance space / black box theater x9
- Real-time trending data wall x9
- Grocery store style check-out stations x9
- Cluttered x8
- Modern furniture x8
- Too much glass x8
- Uncomfortable chairs / hard seats x8
- Small built-in bookshelves / sculptural shelves x8
- Children’s entry with trees x8
- Large open space / cavernous feeling x7
- Illuminated shelves x7
- Too modern / cold feeling x7
- Gaming station in Children’s Area x7
- Tiered seating in Teen Area x7
- A/V recording studio x7
- Laptop / tablet dispenser x7
- Booths with overhang x6
- Standing height service point / tall desks x6
- Gaming in Teen Area x6
- Pod chairs x6
- Hidden nooks / privacy in Teen Area x5
- Bench seating x5
- High ceilings x5
- Plastic furniture x5
- Booths in general x5
- Mobile service point x5

Dislikes 2-4

- Customer and staff sitting side by side x4
- Tables with umbrellas x4
- Concrete seating x4
- Outdoor amphitheater x4
- Grow canopy / community garden x4
- Seating area in between stacks x4
- Creation / maker space with 3-D printer x4
- Fireplace x4
- Historic feel x4
- Mobile face-out display x4
- Hotel style grand entry x4
- Too busy / sensory overload x4
- Booth seating in Teen Area x4
- Funky ceiling x4
- Floor seating for Teens x4
- White boards / write-able walls in Teen Area x4
- Too many glass walls x3
- Fortress desk x3
- Interactive wall x3
- Garage doors for meeting rooms x3
- Vending / café area x3
- Booths with high walls x3
- Carrels with whiteboards x3
- Feel like you're walking into a wall / closed off x3
- Book bins x3
- Bean bag chairs x3
- Play space on floor x3
- Using books as themes x3
- Neighborhood shelving with seating incorporated x3
- Bookstore style x3
- Colors / themes that will be dated in 5-10 years x3
- Big graphics in Children's Area x3
- Dark space / dim x3
- Too open x3
- Seating area near entry x3
- Shelving with materials too high or too low x3
- Collaborative space x2
- Computer bar x2
- Unused outdoor space x2
- Lawn space for movie nights x2
- Roof garden x2
- Device try-it bar / technology petting zoo x2
- “Find It” station x2
- Rowdy kids hanging out at entry x2
- Dull grey couches x2
- Dark colors x2
- Tablet-arm chairs x2
- Too technology focused x2
- Computer bar x2
- Warehouse look x2
- Park-like x2
- Living room look x2
- A lot of plastic / plastic chairs x2
- Laminate floors x2
- Bright red x2
- High ceiling x2

SUMMARY "WORLD CAFE"

TABLE 1

- Natural light is important x4
- Inviting / welcoming x4
- Traditional is important - blend with existing buildings / Shaker Heights x4
- Natural materials (stone with glass) x3
- Energy efficient x3
- Lighting in general is important x2
- Green space x2
- Don't want too contemporary (cold and not inviting) x2
- Traditional looks too old x2
- M is a nice blend between old and new x2
- Classical x2
- Outdoor seating x2

MOST SELECTED IMAGES

M: 24	K: 03
Q: 15	P: 03
A: 14	R: 03
C: 13	T: 03
H: 12	J: 02
D: 09	F: 01
N: 08	I: 01
G: 03	S: 01



SUMMARY "WORLD CAFE"

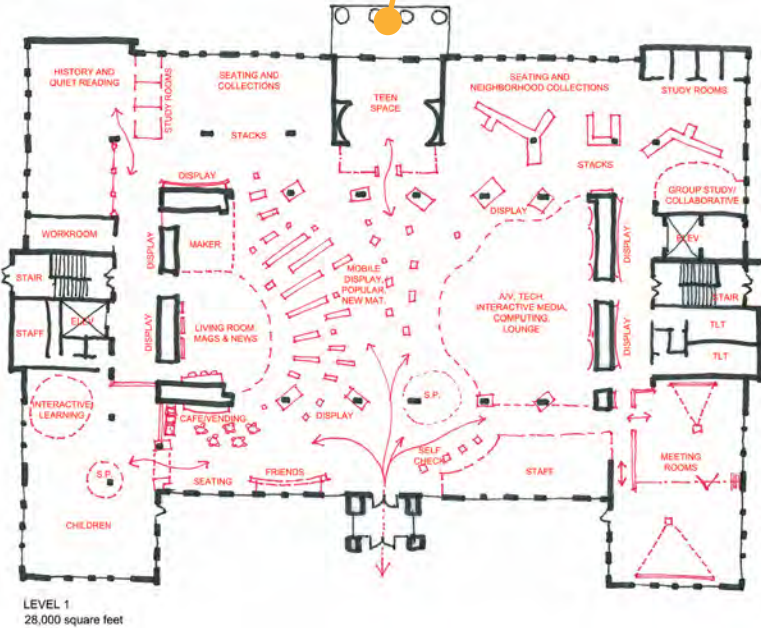
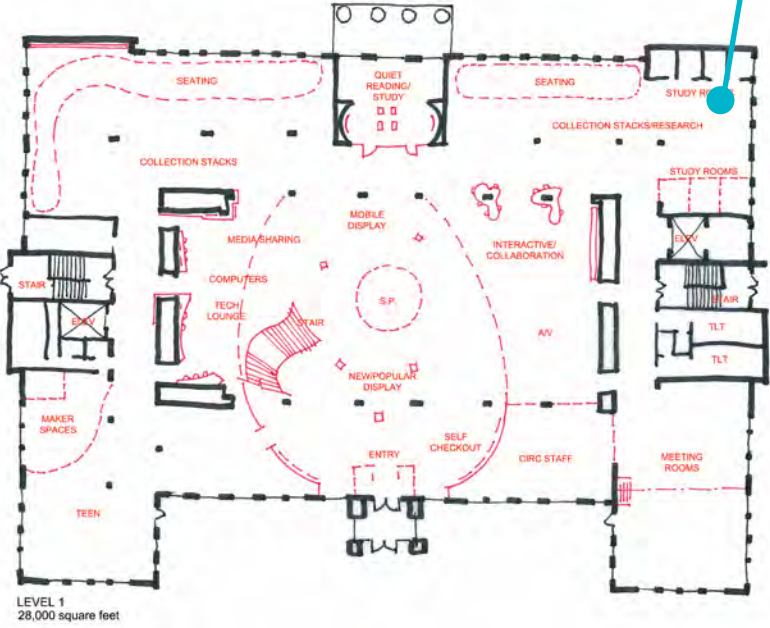
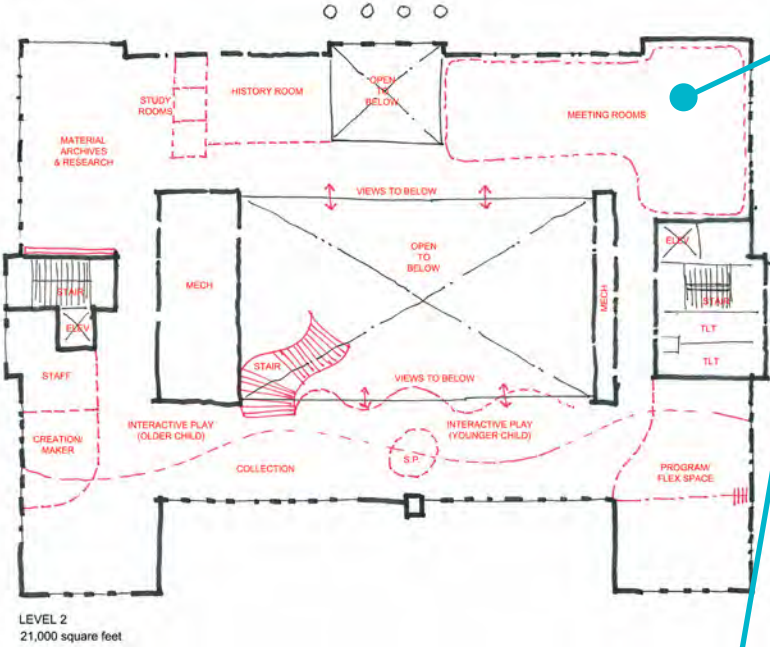
TABLE 2

Concept 1 Comments

- Limited space for books x4
- Would like a more central library location in Shaker Heights x3
- Like teen center on 1st floor near door (respectful, not hidden) x2
- Doesn't improve access x2
- Not enough computer center space x2
- Like centralized stair x2
- Like seating by windows x2
- Like open space x2

Concept 2 Comments

- Is 28,000 SF for public space adequate? Too tight / looks cramped x5
- Not enough room for books x2
- Like Vending / Café Area x2
- Don't like location of Teen Space x2
- Not interested in renovation concepts x2



SUMMARY “WORLD CAFE”

TABLE 3

1 Library: [x32]

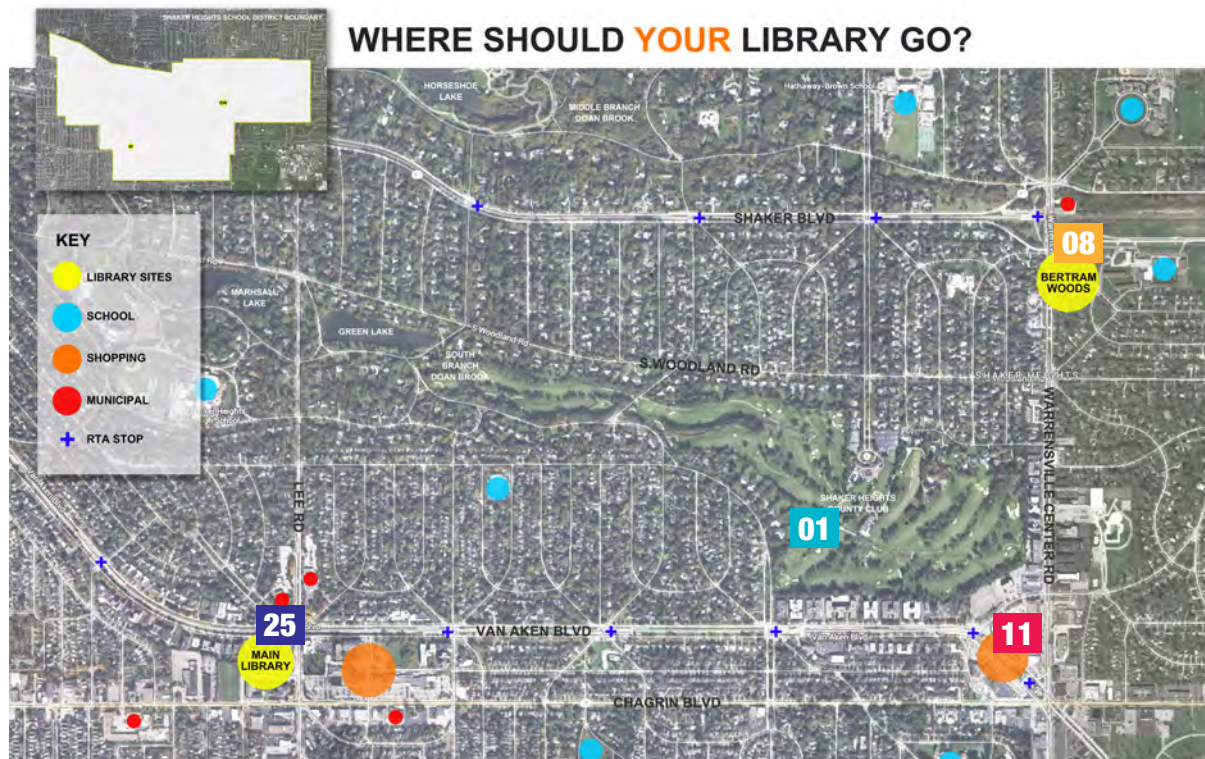
- More financially feasible / cost efficient x8
- One really great 21st century library building x6
- 2 buildings divides the city x4
- Needs to be accessible to all x3
- Environmentally friendly / energy efficient building x2
- One community needs one library x2
- Easier to operate x2

2 Libraries: [x9]

- Both libraries serve different aspects of the community / populations x2

Possible Locations:

- A centralized location x5
- Main is an important place to serve the community x5
- Both Main and BW are accessible via rapid / bus x5
- Van Aken would be the most centrally located x4
- BW connection to middle school x4
- Bertram Woods is already owned by the Library x3
- Main’s proximity to high school x3
- Support and benefit from new development x2
- Main is close to a lot of people x2



Main Library Site: [x25]

Other Site / Van Aken & Warrensville: [x11]

Bertram Woods Library Site: [x8]

Other Site / SHCC Golf Course: [x1]

SUMMARY "WORLD CAFE"

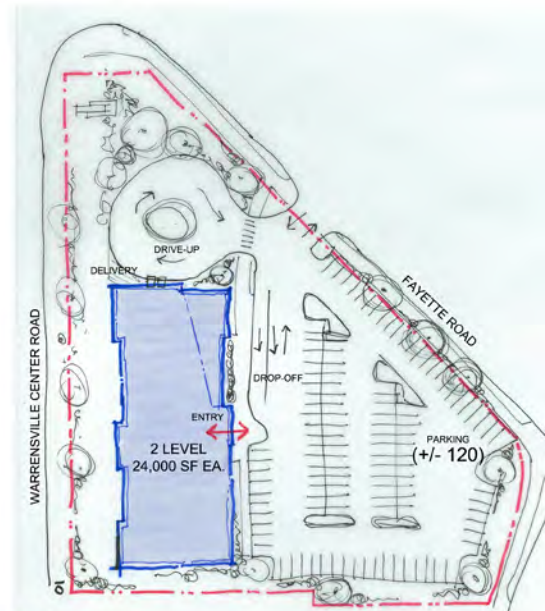
TABLE 4

Additional Comments

- Like the presence of both concepts on Warrensville and Shaker Blvd. / more visible to the community x6
- Reconsider location of site access on Fayette and parking configuration x5
- Consider vacating Fayette Road to join the school and library campuses x5
- Like outdoor programming space x5
- Like lots of glass / natural light x3
- Like that the BW site is already owned by the Library x2
- Might be difficult to draw all of Shaker Hts to the site / far from center of community x2
- Consider a basement for added possible SF x2

Concept 1 [x15]

- Like having more parking x4



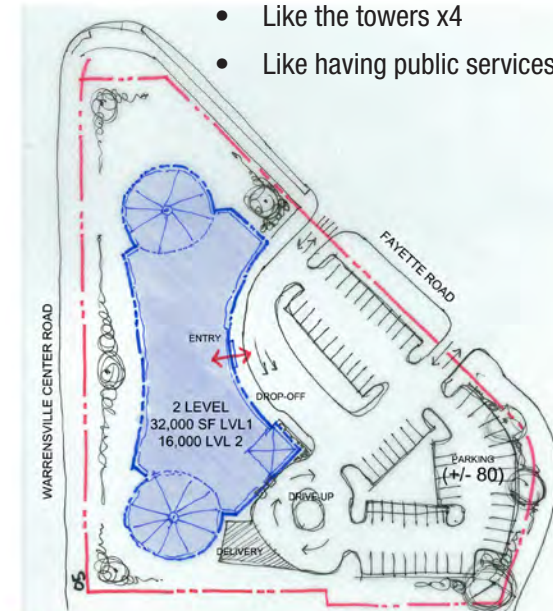
OPTION 1:

- New 48,000 SF building
- Maximizes parking on the site (+/- 120 parking spaces)
- Drive-up book drop
- Delivery access
- Provides opportunity to address Warrensville Rd. with a bold civic gesture
- Flexible floor plan to accommodate future change
- Potential for library materials, programs, and services not limited by confines of an existing building

15

Concept 2 [x29]

- Operating / staff efficiency x6
- Creative design / architecturally and visually interesting x4
- Like the towers x4
- Like having public services on one level x3



OPTION 2:

- New 48,000 SF building
- Assumes the Main Library is vacated or demolished
- Less parking than Option 1 but more green space on the site (+/- 80 parking spaces)
- Potential for outdoor program space
- Drive-up book drop and delivery access
- Flexible floor plan to accommodate future change
- Potential for library materials, programs, and services not limited by confines of an existing building
- Has a presence on Warrensville Rd. / Fayette Rd. Corner through potential corner tower development

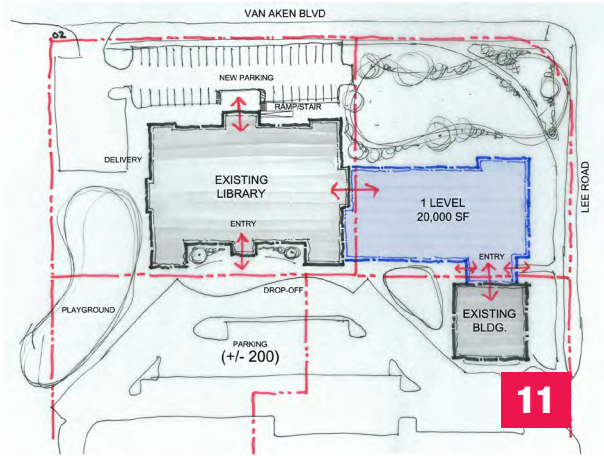
29

SUMMARY "WORLD CAFE"

TABLE 5

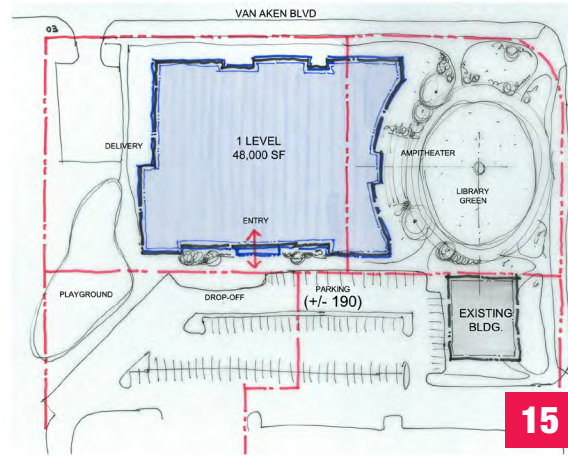
Concept 1 [x11]

- Like library combined with revenue-generating option / tenant space x5
- Interesting to tie to existing building / connect x3



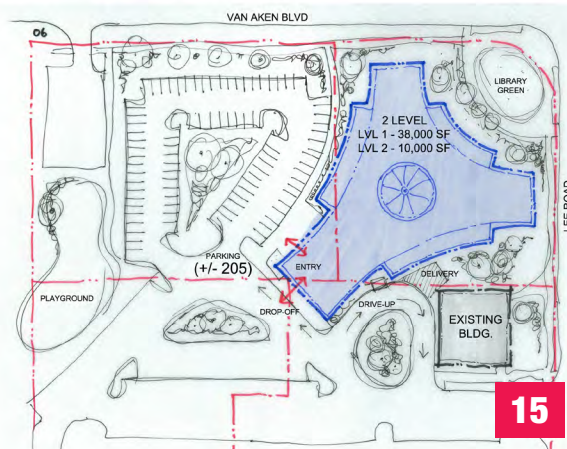
OPTION 1

- New single story addition connects existing Library and Community Building
- Second Floor of Main would be vacated to allow for a separate tenant
- Separate parking along Van Aken Blvd. would be developed for the new tenant
- The library would have a presence nearer to the corner of Van Aken Blvd. and Lee Rd.
- Many of the amenities seen in the "What's Happening in Libraries Today" presentation could be accommodated
- Entire library is on one level, with the exception of the administrative offices located on the lower level



OPTION 2

- Existing Main Library building would be demolished
- A new 48,000 SF single story library building would be constructed in roughly the same location as the existing building
- A "Library Green" would be created at the intersection of Van Aken Blvd. and Lee Rd.
- An amphitheater area would link the east Library facade with the green to be used as outdoor program/tenant space
- Parking is slightly increased to +/- 190 spaces
- Flexible floor plan to accommodate future change
- Potential for library materials, programs, and services not limited by confines of an existing building



OPTION 3

- Existing Main Library building would be demolished
- A new two-level library building would be constructed on the corner of Van Aken Blvd. and Lee Rd.
- The shape of the building would mimic that of the City Hall building across the street
- The building would be an iconic addition to the civic center prominently located and visible from many directions
- This scheme offers the most parking with +/- 205 spaces
- A drive-up book drop is included
- Flexible floor plan to accommodate future change
- Potential for library materials, programs, and services not limited by confines of an existing building

Additional Comments

- Like an entrance to the site from Van Aken x3
- Like the current building x2

Concept 2 [x15]

- Corner is very noisy for library green x3

Concept 3 [x15]

- Like library green and also drive-up services x2
- Like outdoor space / for children too x2
- Likes the push against the intersection x2



***GREAT IDEAS PROVIDED BY SHAKER HTS PUBLIC
LIBRARY STAFF & COMMUNITY PARTICIPANTS***

**We enjoyed working with you, your staff, &
your community during this process**



**SHAKER
LIBRARY**

**Thank you SHPL Board Members for
helping us facilitate this event!**